

2022

# BART Redistricting: Plan A – Increased Opportunities for Minority Protected Classes



GEOinovo Solutions Inc.

BART Redistricting

2/14/2022

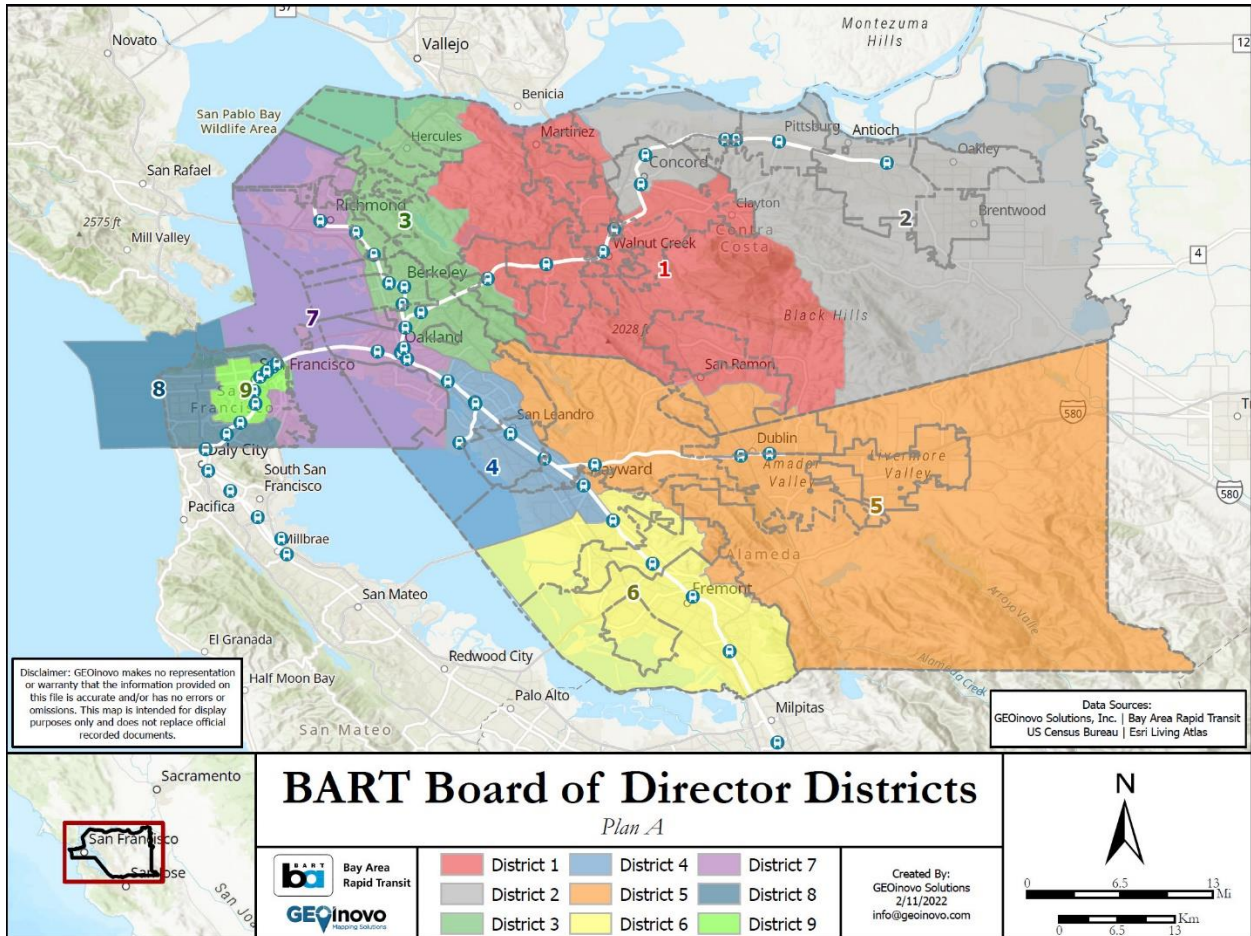
# TABLE OF CONTENTS

1. Overview of Plan A .....	1
1.1. Overview Map of Plan A .....	1
2. Plan A by District .....	2
2.1. District 1 .....	2
2.2. District 2 .....	4
2.3. District 3 .....	6
2.4. District 4 .....	8
2.5. District 5 .....	10
2.6. District 6 .....	12
2.7. District 7 .....	14
2.8. District 8 .....	16
2.9. District 9 .....	18

# 1. OVERVIEW OF PLAN A

## 1.1. OVERVIEW MAP OF PLAN A

Below shows the overview of Plan A. The individual districts are described further in Section 2. Plan A by District.



### Changes to the Citizen Voting Age Population (CVAP) per District

Plan A was designed to maximize opportunities of protected class groups, specifically the Asian and Latino populations. Asian and Latino populations are the largest protected class groups in the BART service area, resulting in the greatest opportunity to create influence districts while maintaining population balance, geographic contiguity, and geographic compactness. To create these districts, significant changes were made to Districts 3, 4 and 7 and additional changes were made to Districts 1, 5, 8, and 9. Districts 2 and 6 maintained over 96% of their current populations.

Detailed breakdowns for each District are provided in Section 2. Plan A by District.

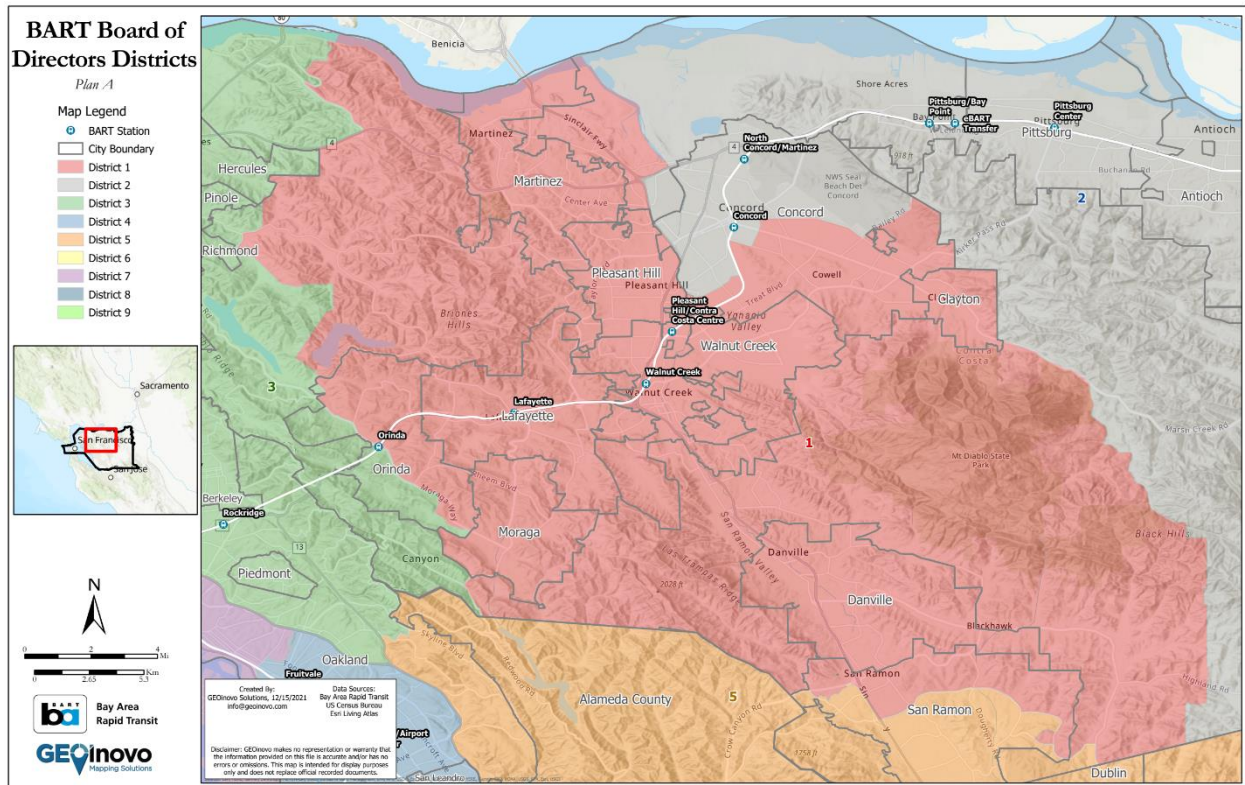
## Bay Area Rapid Transit (BART) Census Population Shifts for Proposed Board of Director Districts

The population shifts for Plan A are similar to the CVAP population changes for each of the nine districts in Plan A. Population shifts for each district and each proposed plan vary depending on changes between 2010 and 2020 U.S. Census Block geography and different rates of population growth throughout the BART service area. In addition to these geographical and demographic changes, Plan A creates districts with greater concentrations of protected class groups, especially Asian and Latino populations. To create these districts, significant changes were made to Districts 3, 4 and 7 and additional changes were made to Districts 1, 5, 8, and 9. Districts 2 and 6 maintained over 96% of their current populations.

Detailed breakdowns for each District are provided in Section 2. Plan A by District.

## 2. PLAN A BY DISTRICT

### 2.1. DISTRICT 1



District 1 is located in Contra Costa County and includes the City of Martinez, City of Pleasant Hill, City of Walnut Creek, the City of Danville, the City of Lafayette, the City of Clayton, the Northern part of the City of San Ramon, the City of Orinda east of Camino Pablo and Moraga Way, and the Southern part of the City of Concord, including Cowell and Meinert.

BART Stations included in District 1:

- Concord (shared with District 2)

- Pleasant Hill/Contra Costa Centre
- Walnut Creek
- Lafayette
- Orinda (shared with District 3)

### 2.1.1. CVAP Population Changes to District 1

The following table was taken from file “BART\_CVAP\_PLANABC\_20220120”.

<b>Plan A, District 1: CVAP From Current Districts</b>	<b>Total CVAP</b>	<b>Percent CVAP</b>
Total	299,472	100.0%
District 1	252,806	84.4%
District 2	10,807	3.6%
District 3	35,859	12.0%
District 7	0	0.0%

*Figure 1 District 1 maintains 84.4% of the current CVAP population and takes 3.6% from the current District 2 and 12.0% from District 3.*

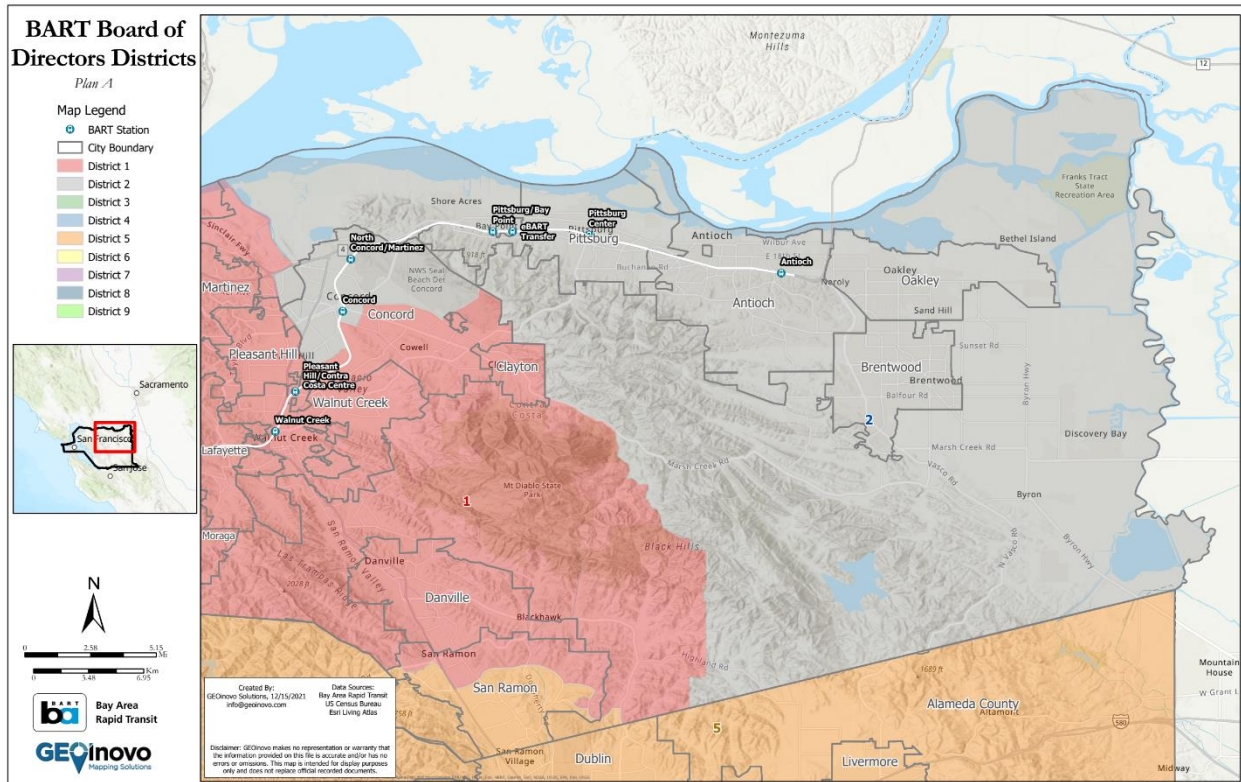
### 2.1.2. Population Changes to District 1

The following table was taken from file “BART\_Population\_PLANABC\_20220120”.

<b>Plan A, District 1: Population From Current Districts</b>	<b>Total Population</b>	<b>Percent Population</b>
Total	414,091	100.0%
District 1	350,136	84.6%
District 2	15,534	3.8%
District 3	48,421	11.7%

*Figure 2 District 1 maintains 84.6% of the current population and takes 11.7% from the current District 3 and 3.8% from District 2.*

## 2.2. DISTRICT 2



District 2 is located in Contra Costa County and includes the City of Pittsburg, the City of Antioch, the City of Brentwood, the City of Oakley, and the Northern part of the City of Concord including Naval Weapons Station Concord and Four Corners.

BART Stations included in District 2:

- Antioch
- Pittsburg Center
- eBART Transfer
- Pittsburg/Bay Point
- North Concord/Martinez
- Concord (shared with District 1)

### 2.2.1. CVAP Population Changes to District 2

The following table was taken from file “BART\_CVAP\_PLANABC\_20220120”.

<b>Plan A, District 2: CVAP From Current Districts</b>	<b>Total CVAP</b>	<b>Percent CVAP</b>
Total	256,980	100.0%
District 1	1,262	0.5%
District 2	255,718	99.5%
District 5	0	0.0%

Figure 3 District 2 maintains 99.5% of the current CVAP population and takes 0.5% from the current District 1.

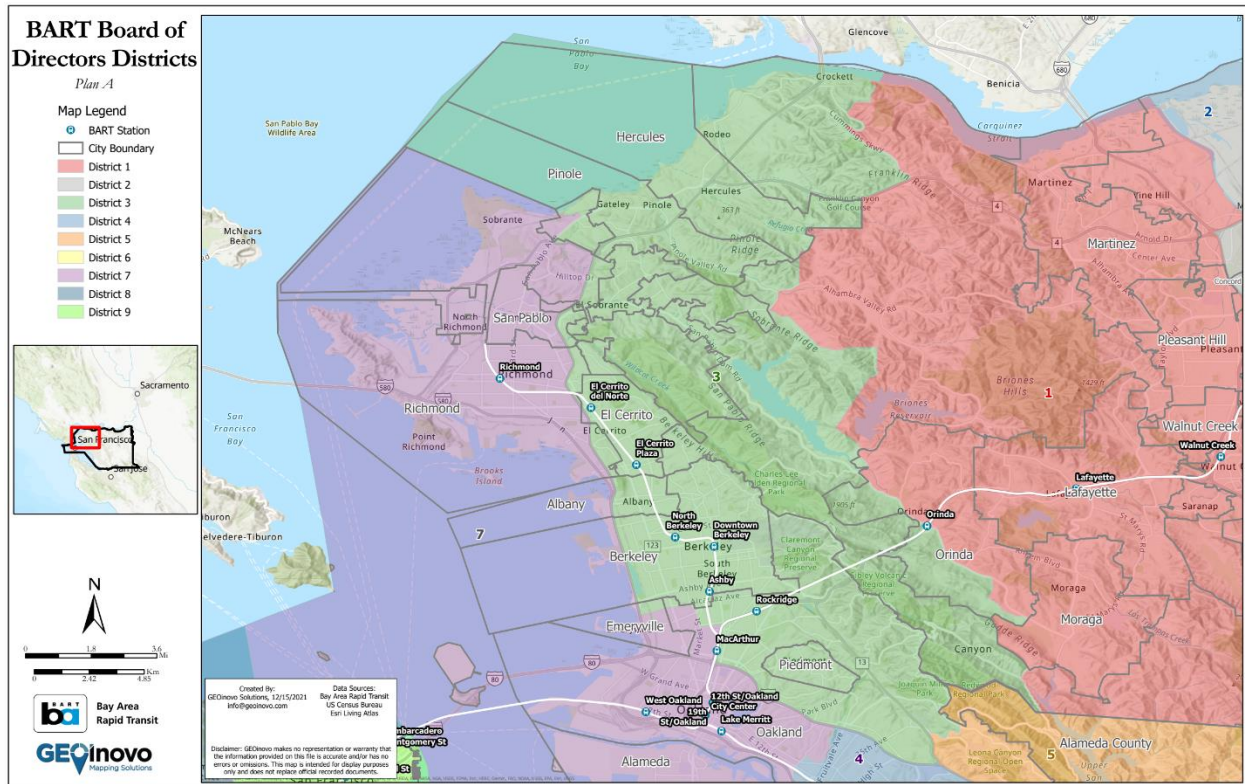
### 2.2.2. Population Changes to District 2

The following table was taken from file “BART\_Population\_PLANABC\_20220120”.

<b>Plan A, District 2: Population From Current Districts</b>	<b>Total Population</b>	<b>Percent Population</b>
Total	414,469	100.0%
District 1	2,008	0.5%
District 2	412,461	99.5%

Figure 4 District 2 maintains 99.5% of the current population and takes 0.5% from the current District 1.

## 2.3. DISTRICT 3



District 3 falls in both Contra Cost County and Alameda County. It includes the City of Hercules, the City of Pinole, the Eastern part of the City of Richmond, the City of El Cerrito, the City of El Cerrito, the City of Albany, the inland Southeastern part of El Cerrito, the City of Berkeley east of Highway 580, and the City of Orinda southwest of Camino Pablo and Moraga Way.

BART Stations included in District 3:

- El Cerrito del Norte (shared with District 7)
- El Cerrito Plaza
- North Berkeley
- Downtown Berkeley
- Ashby
- Rockridge
- McArthur (shared with District 7)
- Orinda (shared with District 1)

### 2.3.1. CVAP Population Changes to District 3

The following table was taken from file “BART\_CVAP\_PLANABC\_20220120”.



<b>Plan A, District 3: CVAP From Current Districts</b>	<b>Total CVAP</b>	<b>Percent CVAP</b>
Total	301,109	100.0%
District 1	0	0.0%
District 3	154,399	51.3%
District 4	32,736	10.9%
District 7	113,974	37.9%

Figure 5 District 3 maintains 51.3% of the current CVAP population and takes 37.9% from the current District 7 and 10.9% from the current District 4.

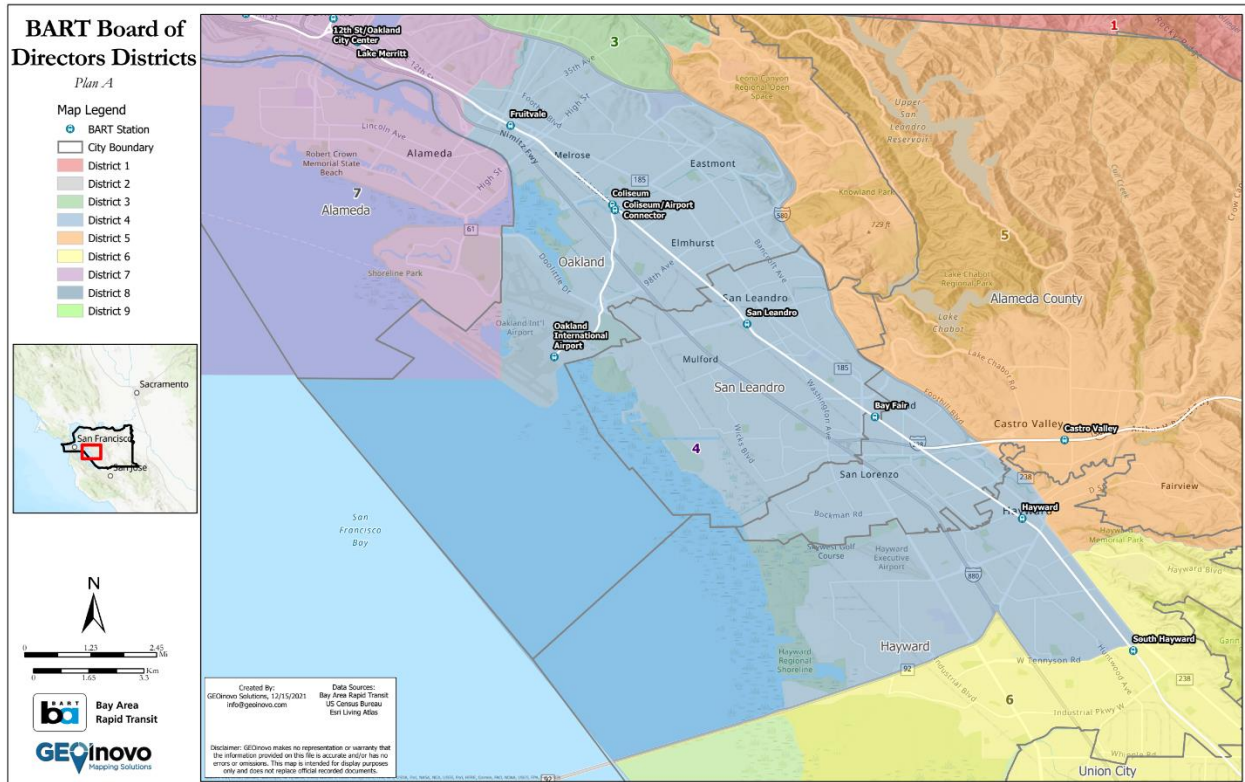
### 2.3.2. Population Changes to District 3

The following table was taken from file “BART\_Population\_PLANABC\_20220120”.

<b>Plan A, District 3: Population From Current Districts</b>	<b>Total Population</b>	<b>Percent Population</b>
Total	413,925	100.0%
District 1	2	0.0%
District 3	207,273	50.1%
District 4	45,265	10.9%
District 7	161,385	39.0%

Figure 6 District 3 maintains 50.1% of the current population and takes 39.0% from the current District 7, 10.9% from the current District 4, and less than 0.0% from the current District 1.

## 2.4. DISTRICT 4



District 4 is located in Alameda County and includes the City of San Leandro, San Lorenzo, Ashland, Mulford, the City of Oakland West of 580 to Oakland International Airport, Elmhurst, Eastmont, Melrose, Mills College, and the Northwestern part of the City of Hayward including Hayward Executive Airport.

BART Stations included in District 4:

- Fruitvale
- Coliseum
- Coliseum/Airport Connector
- Oakland International Airport
- San Leandro
- Bay Fair
- Hayward (shared with District 5)
- South Hayward (shared with District 6)

### 2.4.1. CVAP Population Changes to District 4

The following table was taken from file “BART\_CVAP\_PLANABC\_20220120”.

<b>Plan A, District 4: CVAP From Current Districts</b>	<b>Total CVAP</b>	<b>Percent CVAP</b>
Total	239,643	100.0%
District 3	81,143	33.9%
District 4	110,849	46.3%
District 5	47,651	19.9%

*Figure 7 District 4 maintains 46.3% of the current CVAP population and takes 33.9% from the current District 3 and 19.9% from the current District 5.*

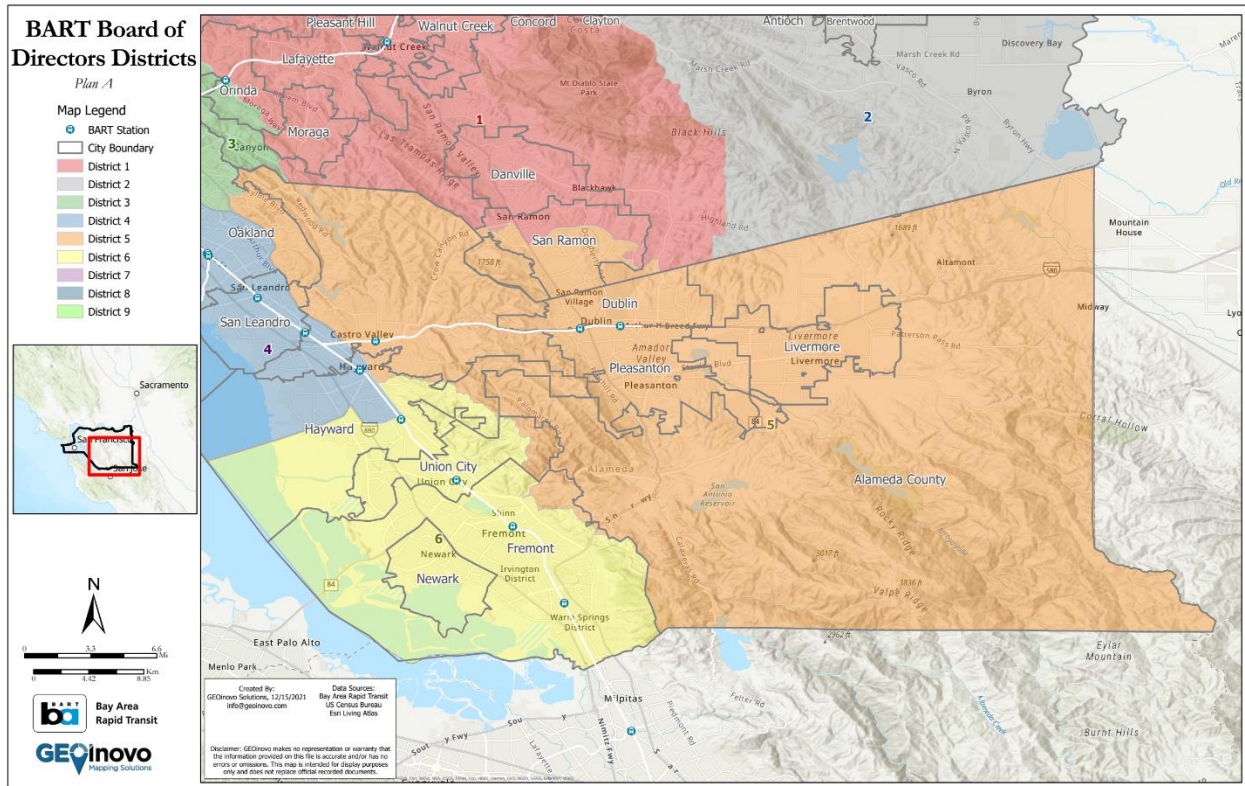
### 2.4.2. Population Changes to District 4

The following table was taken from file “BART\_Population\_PLANABC\_20220120”.

<b>Plan A, District 4: Population From Current Districts</b>	<b>Total Population</b>	<b>Percent Population</b>
Total	414,598	100.0%
District 3	129,422	31.2%
District 4	199,078	48.0%
District 5	86,098	20.8%

*Figure 8 District 4 maintains 48.0% of the current population and takes 31.2% from the current District 3 and 20.8% from District 5.*

## 2.5. DISTRICT 5



District 5 is in Alameda and Contra Costa Counties. It includes the City of Livermore, the City of Pleasanton, the City of Dublin, the Eastern part of the City of Hayward, the Eastern part of Union City, a portion of the Northeastern part of the City of Fremont, and the Southern part of the City of San Ramon.

BART Stations included in District 5:

- Hayward (shared with District 4)
- Castro Valley
- West Dublin/Pleasanton
- Dublin/Pleasanton

### 2.5.1. CVAP Population Changes to District 5

The following table was taken from file “BART\_CVAP\_PLANABC\_20220120”.

<b>Plan A, District 5: CVAP From Current Districts</b>	<b>Total CVAP</b>	<b>Percent CVAP</b>
Total	257,502	100.0%
District 1	31,281	12.1%
District 3	13,618	5.3%
District 4	97	0.0%
District 5	211,368	82.1%
District 6	1,138	0.4%

*Figure 9 District 5 maintains 82.1% of the current CVAP population and takes 12.1% from the current District 1, 5.3% from District 3, 0.4% from the current District 6, and less than 0.1% from District 4.*

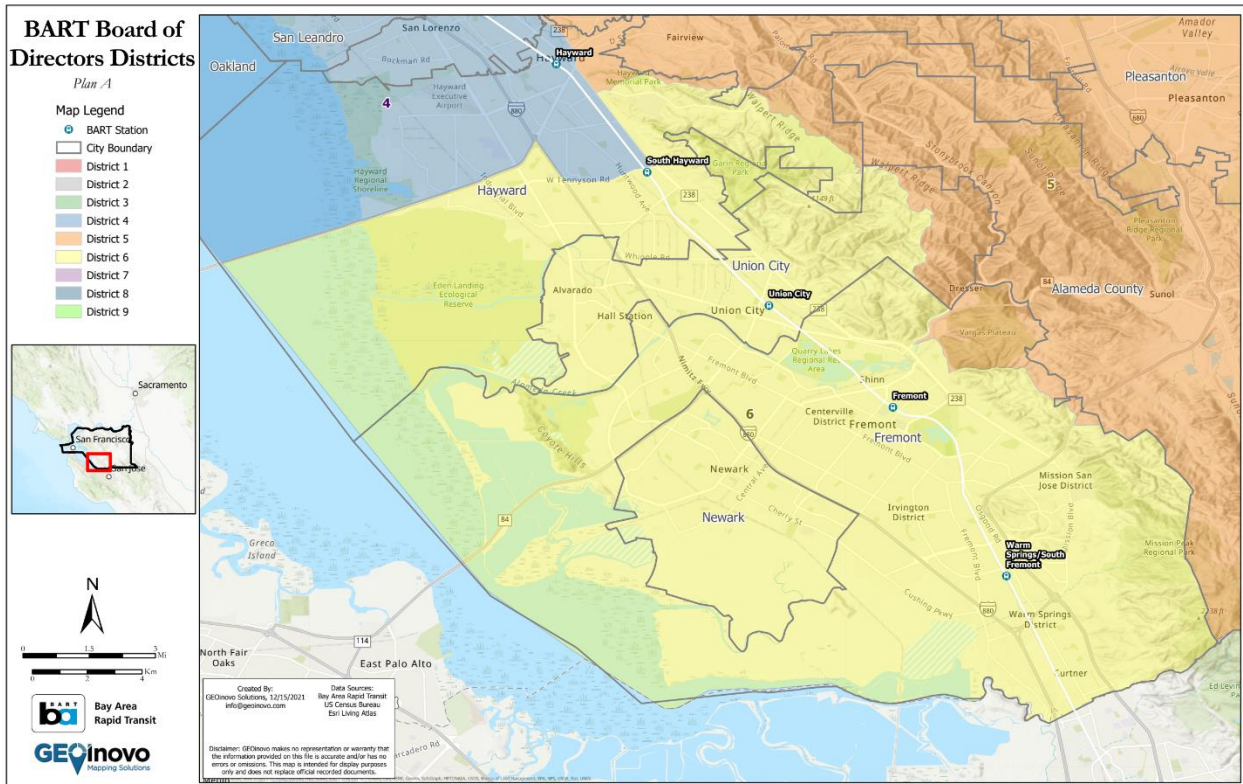
### 2.5.2. Population Changes to District 5

The following table was taken from file “BART\_Population\_PLANABC\_20220120”.

<b>Plan A, District 5: Population From Current Districts</b>	<b>Total Population</b>	<b>Percent Population</b>
Total	412,745	100.0%
District 1	59,338	14.4%
District 3	17,551	4.3%
District 4	153	0.0%
District 5	334,108	80.9%
District 6	1,595	0.4%

*Figure 10 District 5 maintains 80.9% of the current population and takes 0.4% from the current District 6, 4.3% from the current District 3, and 14.4% from the current District 1.*

## 2.6. DISTRICT 6



District 6 is in Alameda County and includes the City of Newark, the majority of the City of Fremont, the majority of Union City, and the Southern part of the City of Hayward. Major landmarks include California State University East Bay, Eden Landing Ecological Reserve, Union Landing Shopping Center, Quarry Lakes Regional Recreation Area, Pacific Commons, and large industrial and commercial complexes at the south end of the district.

BART Stations included in District 6:

- South Hayward (shared with District 4)
- Union City
- Fremont
- Warm Springs/South Fremont

### 2.6.1. CVAP Population Changes to District 6

The following table was taken from file “BART\_CVAP\_PLANABC\_20220120”.

<b>Plan A, District 6: CVAP From Current Districts</b>	<b>Total CVAP</b>	<b>Percent CVAP</b>
Total	257,071	100.0%
District 5	11,094	4.3%
District 6	245,977	95.7%

*Figure 11 District 6 maintains 95.7% of the current CVAP population and takes 4.3% from the current District 5.*

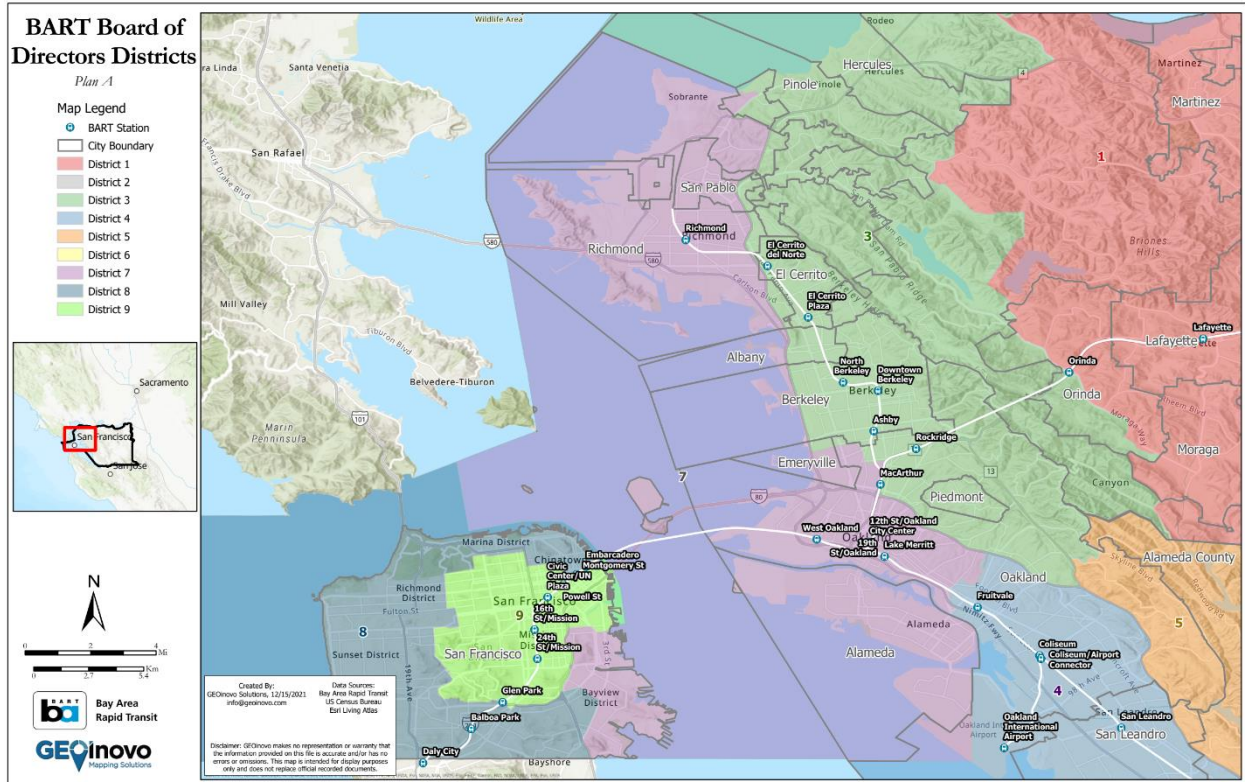
### 2.6.2. Population Changes to District 6

The following table was taken from file “BART\_Population\_PLANABC\_20220120”.

<b>Plan A, District 6: Population From Current Districts</b>	<b>Total Population</b>	<b>Percent Population</b>
Total	413,991	100.0%
District 5	16,538	4.0%
District 6	397,453	96.0%

*Figure 12 District 6 maintains 96.0% of the current population and takes 4.0% from the current District 5.*

## 2.7. DISTRICT 7



District 7 is in both Alameda, Contra Costa Counties, and San Francisco Counties. It includes the the City of Alameda, the Northwestern part of the City of Oakland, the urban area of the City of Richmond West of Highway 80 and the Potrero District and Bayview District of San Francisco.

BART Stations included in District 7:

- Richmond
- El Cerrito del Norte (shared with District 3)
- MacArthur (shared with District 3)
- 19<sup>th</sup> St/Oakland
- 12<sup>th</sup> St/Oakland City Center
- Lake Merritt
- West Oakland

### 2.7.1. CVAP Population Changes to District 7

The following table was taken from file “BART\_CVAP\_PLANABC\_20220120”.



<b>Plan A, District 7: CVAP From Current Districts</b>	<b>Total CVAP</b>	<b>Percent CVAP</b>
Total	255,216	100.0%
District 4	121,204	47.5%
District 7	125,284	49.1%
District 9	8,728	3.4%

Figure 13 District 7 maintains 49.1% of the current CVAP population, takes 47.5% from District 4, and takes 3.4% from the current District 9.

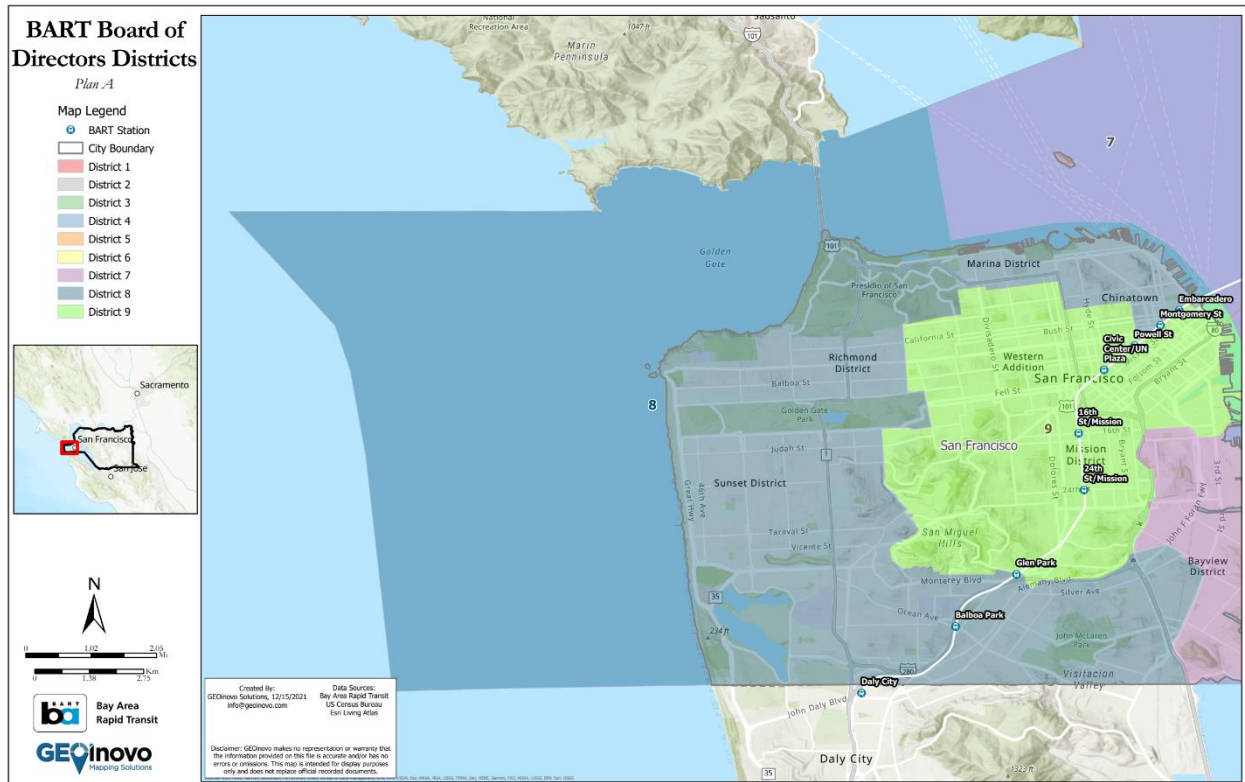
### 2.7.2. Population Changes to District 7

The following table was taken from file “BART\_Population\_PLANABC\_20220120”.

<b>Plan A, District 7: Population From Current Districts</b>	<b>Total Population</b>	<b>Percent Population</b>
Total	414,578	100.0%
District 4	173,609	41.9%
District 7	228,445	55.1%
District 9	12,524	3.0%

Figure 14 District 7 maintains 55.1% of the current population, takes 41.9% from District 4, and 3.0% from the current District 9.

## 2.8. DISTRICT 8



District 8 is in San Francisco County and includes the following neighborhoods and points of interest in San Francisco: North Beach, Chinatown, Marina District, Fort Winfield Scott, Richmond District, Sunset District, Ingleside, John McLaren Park, and the Golden Gate Bridge, and the world-famous Lombard St.

BART Stations included in District 8:

- Balboa Park
- Glen Park (shared with District 9)
- Powell St (shared with District 9)
- Embarcadero (shared with District 9)
- Montgomery St (shared with District 9)

### 2.8.1. CVAP Population Changes to District 8

The following table was taken from file “BART\_CVAP\_PLANABC\_20220120”.

<b>Plan A, District 8: CVAP From Current Districts</b>	<b>Total CVAP</b>	<b>Percent CVAP</b>
Total	322,244	100.0%
District 7	11,396	3.5%
District 8	260,891	81.0%
District 9	49,957	15.5%

Figure 15 District 8 maintains 81.0% of the current CVAP population and takes 15.5% from the current District 9 and 3.5% from the current District 7.

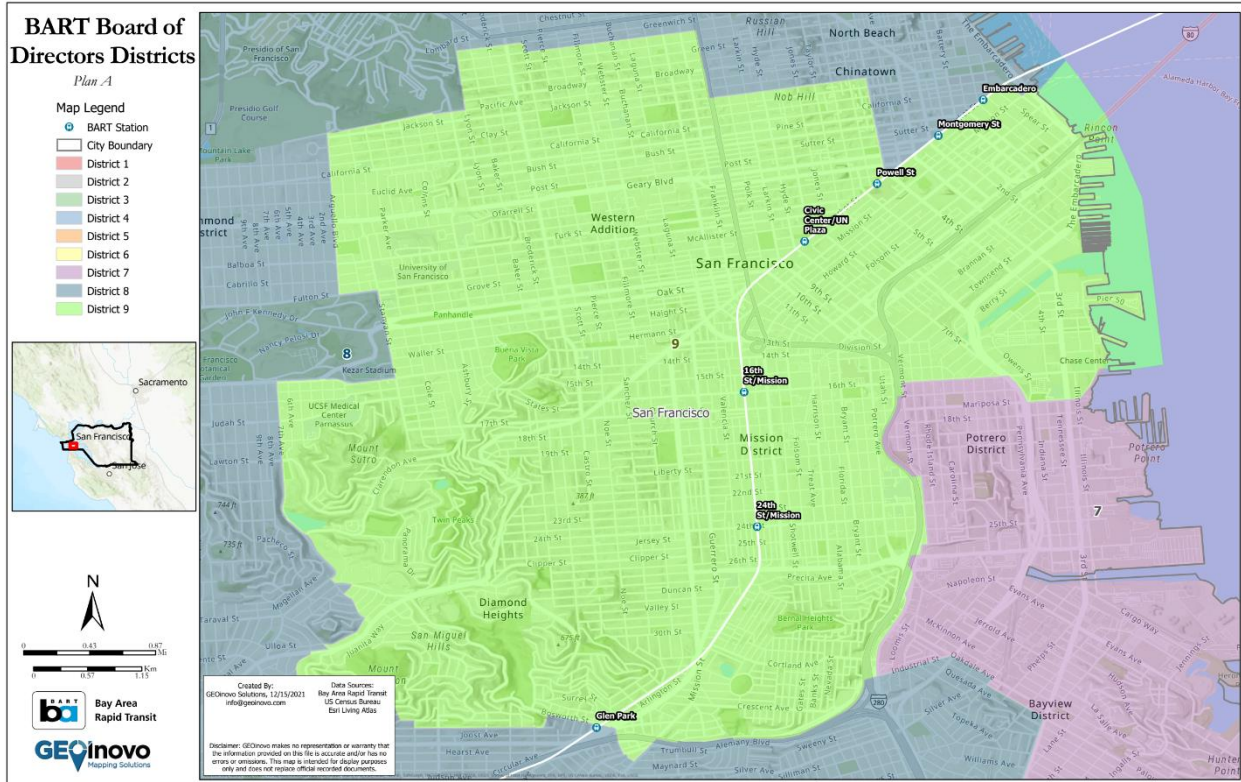
### 2.8.2. Population Changes to District 8

The following table was taken from file “BART\_Population\_PLANABC\_20220120”.

<b>Plan A, District 8: Population From Current Districts</b>	<b>Total Population</b>	<b>Percent Population</b>
Total	414,049	100.0%
District 7	17,362	4.2%
District 8	330,255	79.8%
District 9	66,432	16.0%

Figure 16 District 8 maintains 79.8% of the current population and takes 16.0% from the current District 9 and 4.2% from District 7.

## 2.9. DISTRICT 9



District 9 is in San Francisco County and includes the following neighborhoods and points of interest in San Francisco: Western Addition, Twin Peaks, Diamond Heights, Glen Canyon Park, St Mary’s Recreation Center, Bernal Heights Park, Mission District, Potrero Center, Pier 50, Zuckerberg San Francisco General, UCSF Medical Center Parnassus, Union Square, and the Salesforce Transit Center.

BART Stations included in District 9:

- Embarcadero (shared with District 8)
- Montgomery St (shared with District 8)
- Powell St (shared with District 8)
- Civic Center/UN Plaza
- 16<sup>th</sup> St/Mission
- 24<sup>th</sup> St/Mission
- Glen Park (shared with District 8)

### 2.9.1. CVAP Population Changes to District 9

The following table was taken from file “BART\_CVAP\_PLANABC\_20220120”.

<b>Plan A, District 9: CVAP From Current Districts</b>	<b>Total CVAP</b>	<b>Percent CVAP</b>
Total	302,494	100.0%
District 7	20,198	6.7%
District 8	42,687	14.1%
District 9	239,609	79.2%

Figure 17 District 9 maintains 79.2% of the current CVAP population and takes 14.1% from the current District 8 and 6.7% from the current District 7.

### 2.9.2. Population Changes to District 9

The following table was taken from file “BART\_Population\_PLANABC\_20220120”.

<b>Plan A, District 9: Population From Current Districts</b>	<b>Total Population</b>	<b>Percent Population</b>
Total	414,084	100.0%
District 7	35,448	8.6%
District 8	53,435	12.9%
District 9	325,201	78.5%

Figure 18 District 9 maintains 78.5% of the current population and takes 12.9% from the current District 8 and 8.6% from District 7.