

2022

BART Redistricting: Plan B – Following Current Boundary Lines



GEOinovo Solutions Inc.

BART Redistricting

2/14/2022

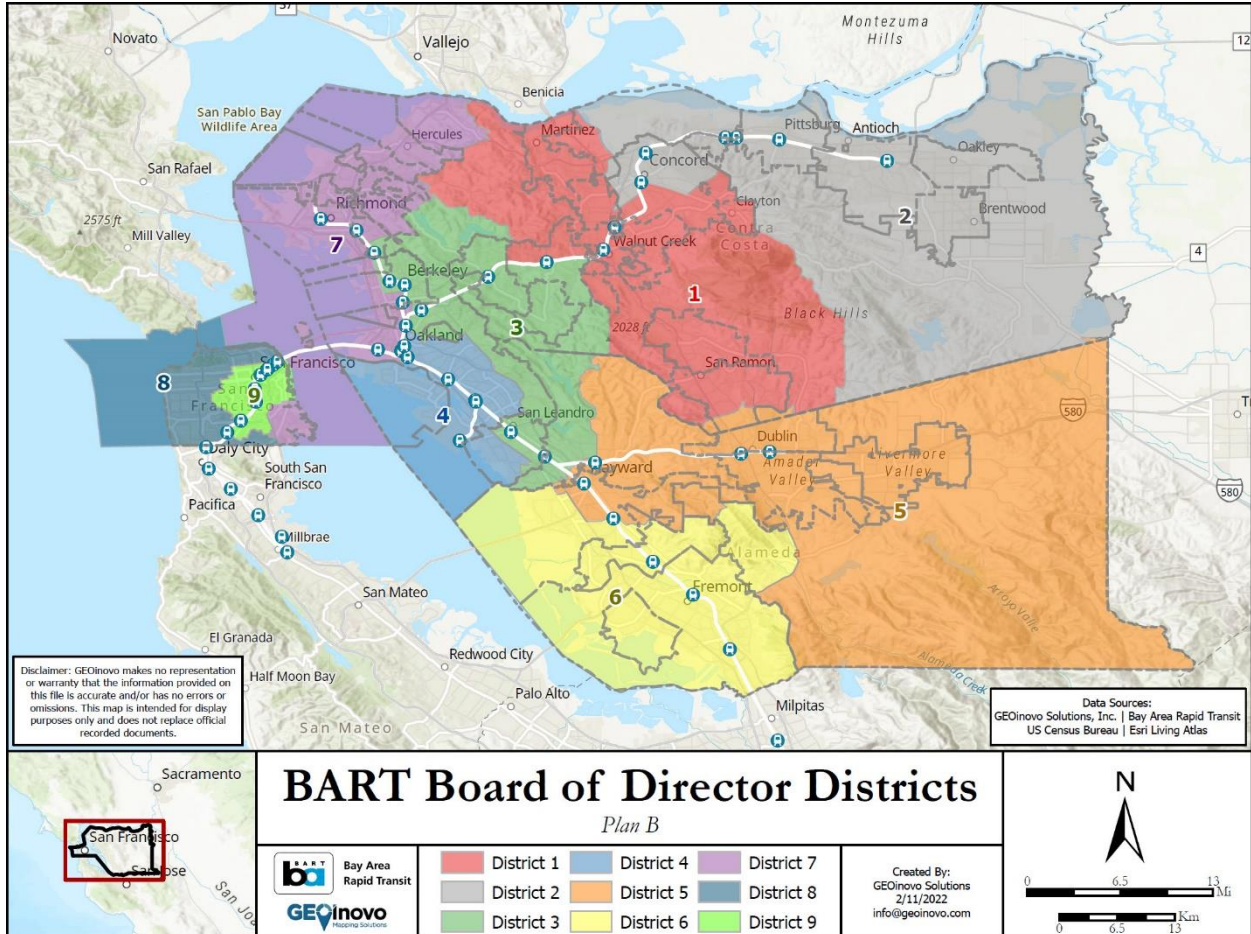
TABLE OF CONTENTS

- 1. Overview of Plan B 1
 - 1.1. Overview Map of Plan B..... 1
- 2. Plan B by District 2
 - 2.1. District 1 2
 - 2.2. District 2..... 4
 - 2.3. District 3..... 6
 - 2.4. District 4..... 8
 - 2.5. District 5..... 10
 - 2.6. District 6..... 12
 - 2.7. District 7..... 14
 - 2.8. District 8..... 16
 - 2.9. District 9..... 18

1. OVERVIEW OF PLAN B

1.1. OVERVIEW MAP OF PLAN B

Below shows the overview of Plan B. The individual districts are described further in Section 2. Plan B by District.



Changes to the Citizen Voting Age Population (CVAP) per District

Plan B preserves the geography of the current BART Districts as much as possible. This plan makes minor changes to the boundaries to account for population changes from 2010 to 2020.

In this plan, all districts maintain greater than 90% of their current CVAP population. Four districts (District 1, 5, 6, 7) maintain greater than 95% of their current CVAP population and two districts (District 2 and 4) maintain greater than 99% of their CVAP population when compared to current the districts. This plan contains the least changes from the current boundaries.

Detailed breakdowns for each District are provided in Section 2. Plan B by District.

Bay Area Rapid Transit (BART) Census Population Shifts for Proposed Board of Director Districts

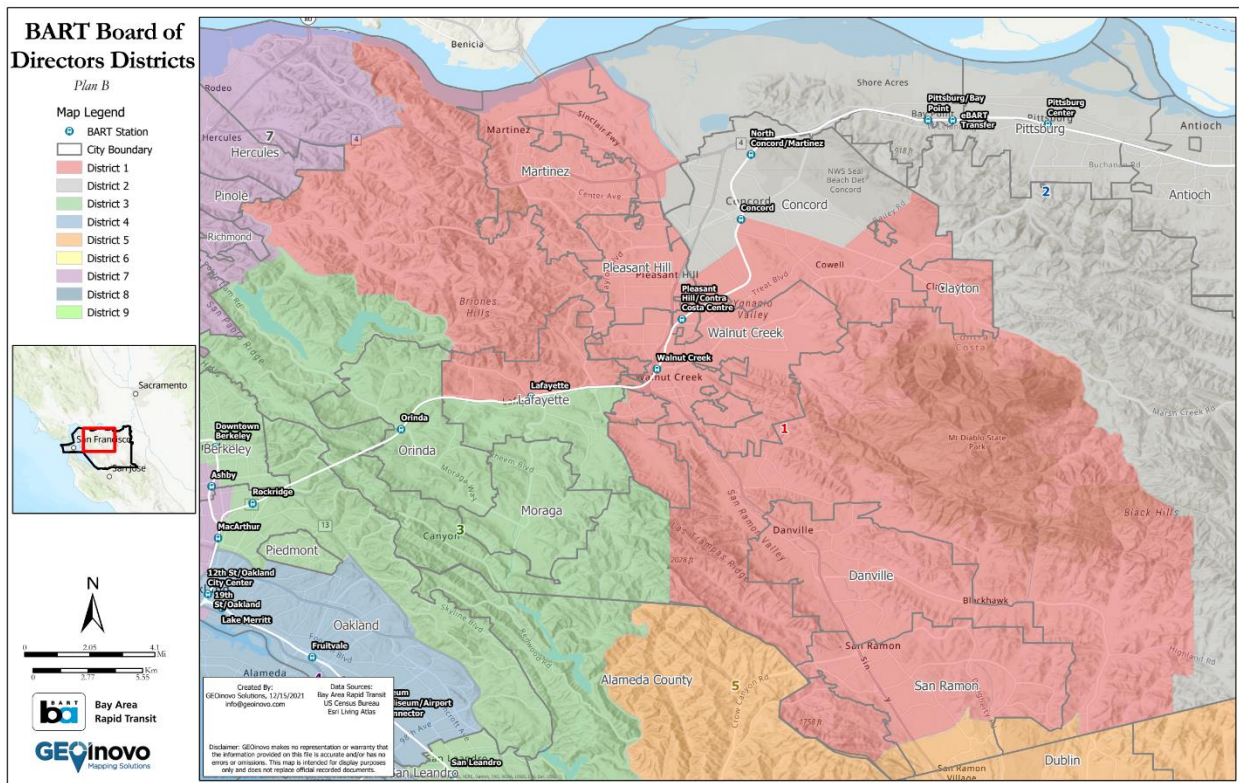
Similarly, to the CVAP population shifts for each of the nine districts, Plan B remains largely unchanged. Population shifts for each district and each proposed plan vary depending on changes between 2010 and 2020 U.S. Census Block geography and different rates of population growth throughout the BART service area.

In this plan, all districts maintain greater than 90% of their current population. Four districts (District 1, 5, 6, 7) maintain greater than 95% of their current population and two districts (District 2 and 4) maintain greater than 99% of their population when compared to the current districts. This plan contains the least changes from the current boundaries.

Detailed breakdowns for each District are provided in Section 2. Plan B by District.

2. PLAN B BY DISTRICT

2.1. DISTRICT 1



District 1 is in Contra Costa County and includes the City of Martinez, Pleasant Hill, Walnut Creek, the City of Danville, the Northern part of the City of San Ramon, the Northern part of the City of Lafayette – North of Route 24, and the Southern part of the City of Concord, including Cowell and Meinert, and the City of Clayton. District 1 also covers portions of unincorporated Contra Costa County, including Briones Regional Park and the area west of the City of Martinez and north of the City of Lafayette.

BART Stations included in District 1:

- Concord (shared with District 2)
- Pleasant Hill/Contra Costa Centre
- Walnut Creek
- Lafayette (shared with District 3)

2.1.1. CVAP Population Changes to District 1

The following table was taken from file “BART_CVAP_PLANABC_20220120”.

Plan B, District 1: CVAP From Current Districts	Total CVAP	Percent CVAP
Total	286,953	100.0%
District 1	277,763	96.8%
District 2	9,190	3.2%
District 3	0	0.0%

Figure 1 District 1 maintains 96.8% of the current CVAP population and takes 3.2% from the current District 2.

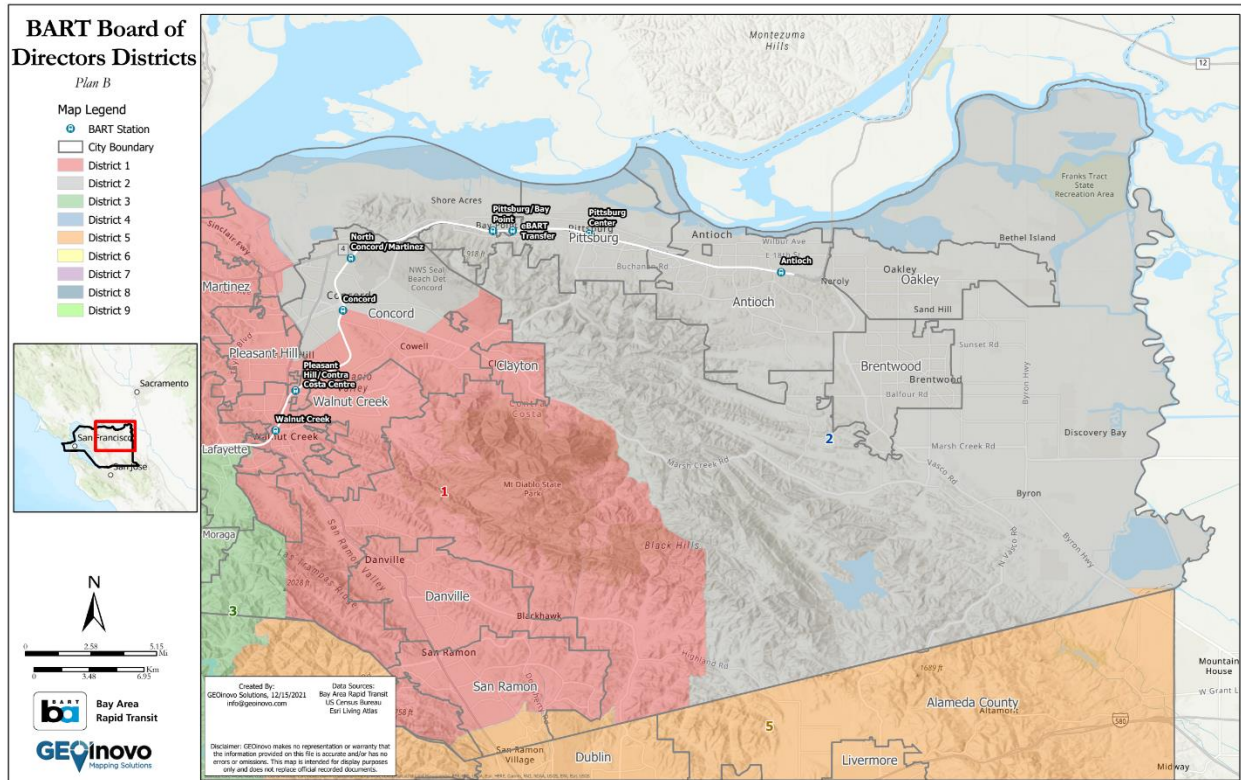
2.1.2. Population Changes to District 1

The following table was taken from file “BART_Population_PLANABC_20220120”.

Plan B, District 1: Population From Current Districts	Total Population	Percent Population
Total	414,010	100.0%
District 1	399,289	96.4%
District 2	14,720	3.6%
District 3	1	0.0%

Figure 2 District 1 maintains 96.4% of the current population and takes 3.6% from the current District 2 and less than 0.0% from District 3.

2.2. DISTRICT 2



District 2 is in Contra Costa County and includes the City of Pittsburg, the City of Antioch, the City of Brentwood, the City of Oakley, and the Northern part of the City of Concord including NWS Seal Beach Det Concord and Four Corners.

BART Stations included in District 2:

- Antioch
- Pittsburg Center
- eBART Transfer
- Pittsburg/Bay Point
- North Concord/Martinez
- Concord (shared with District 1)

2.2.1. CVAP Population Changes to District 2

The following table was taken from file “BART_CVAP_PLANABC_20220120”.

Plan B, District 2: CVAP From Current Districts	Total CVAP	Percent CVAP
Total	257,698	100.0%
District 1	363	0.1%
District 2	257,335	99.9%

Figure 3 District 2 maintains 99.9% of the current CVAP population and takes 0.1% from the current District 1.

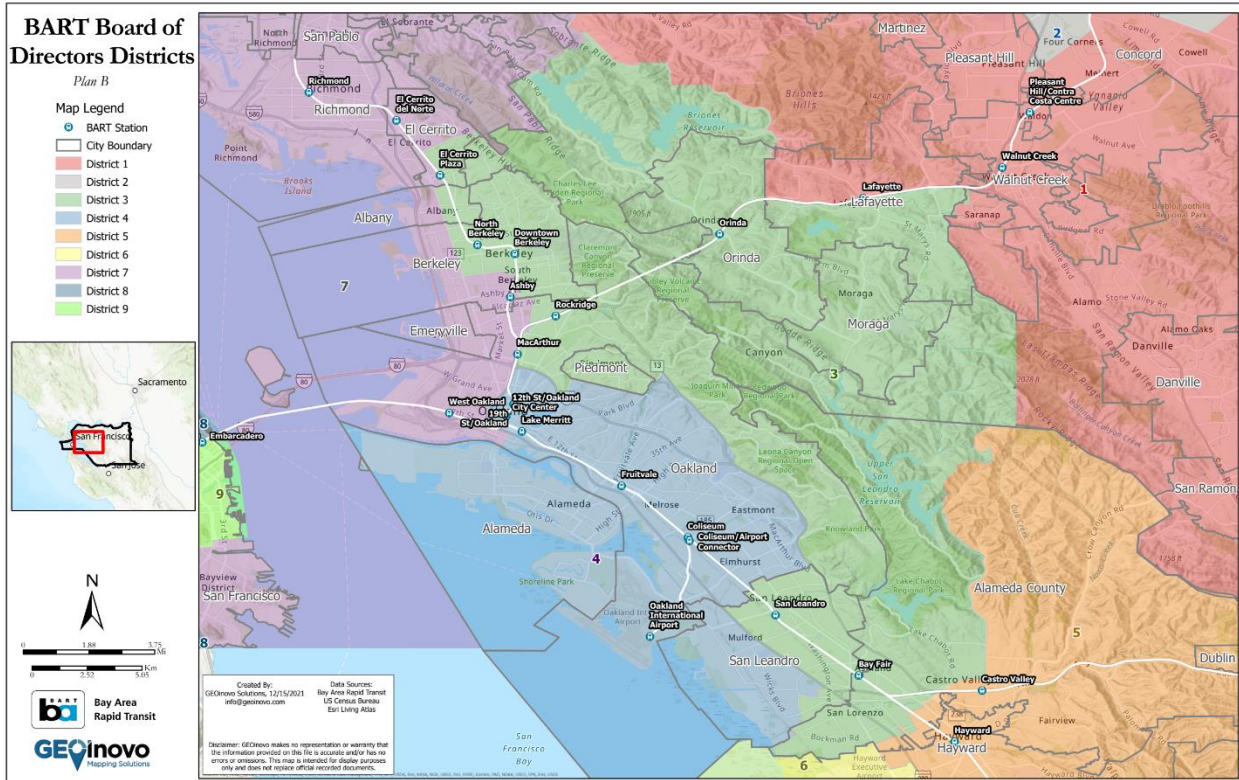
2.2.2. Population Changes to District 2

The following table was taken from file “BART_Population_PLANABC_20220120”.

Plan B, District 2: Population From Current Districts	Total Population	Percent Population
Total	413,907	100.0%
District 1	632	0.2%
District 2	413,275	99.8%

Figure 4 District 2 maintains 99.8% of the current population and takes 0.2% from the current District 1.

2.3. DISTRICT 3



District 3 is in both Contra Costa and Alameda Counties and includes the City of Orinda, the inland Southeastern part of El Cerrito, the Eastern part of Berkeley including North Berkeley, Downtown Berkeley, University of California-Berkeley, the City of Piedmont, the City of Moraga, the Eastern part of the City of San Leandro, and the Southern half of the City of Lafayette.

BART Stations included in District 3:

- El Cerrito Plaza (shared with District 7)
- North Berkeley
- Downtown Berkeley
- Ashby (shared with District 7)
- MacArthur (shared with District 4 and 7)
- Rockridge
- Orinda
- Lafayette (shared with District 1)
- San Leandro
- Bayfair
- Castro Valley (shared with District 5)

2.3.1. CVAP Population Changes to District 3

The following table was taken from file “BART_CVAP_PLANABC_20220120”.

Plan B, District 3: CVAP From Current Districts	Total CVAP	Percent CVAP
Total	294,047	100.0%
District 1	294	0.1%
District 3	270,405	92.0%
District 4	3,835	1.3%
District 5	19,513	6.6%

Figure 5 District 3 maintains 92.0% of the current CVAP population and takes 6.6% from the current District 5, 1.3% from the current District 4, and 0.1% from the current District 1.

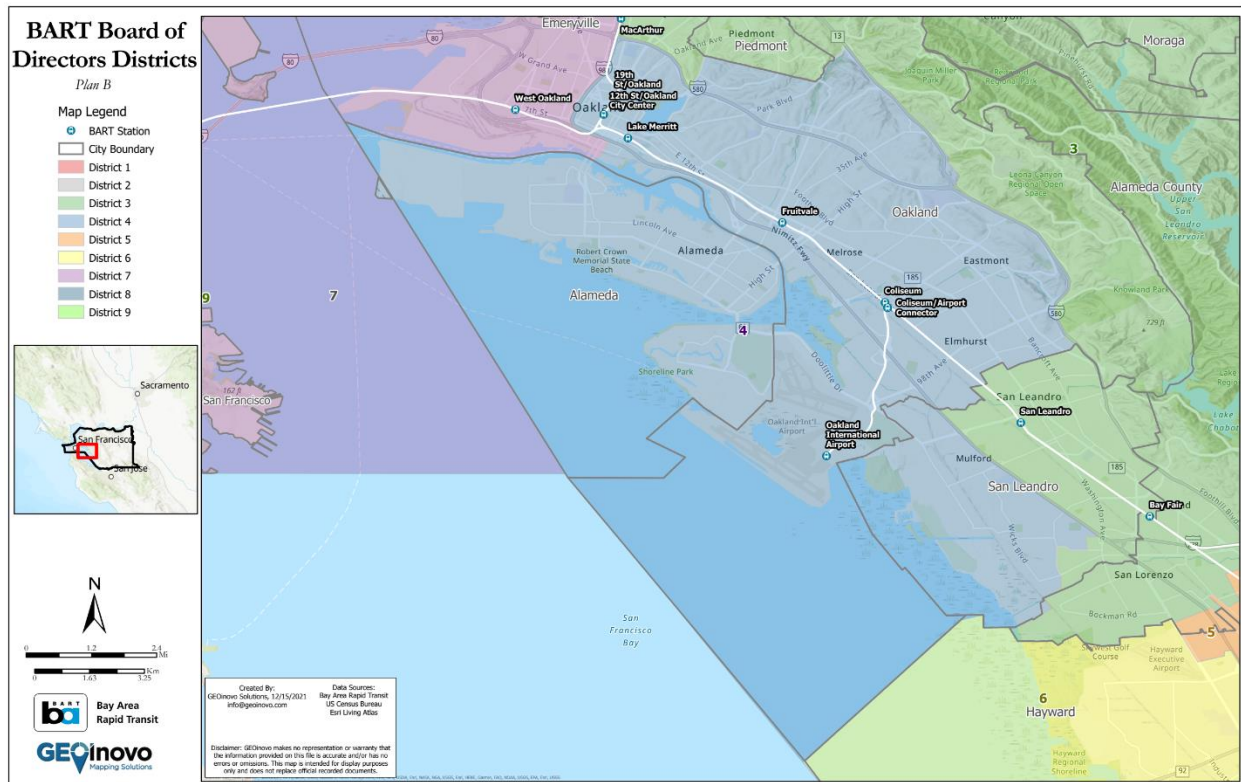
2.3.2. Population Changes to District 3

The following table was taken from file “BART_Population_PLANABC_20220120”.

Plan B, District 3: Population From Current Districts	Total Population	Percent Population
Total	413,689	100.0%
District 1	446	0.1%
District 3	379,853	91.8%
District 4	5,162	1.2%
District 5	28,228	6.8%

Figure 6 District 3 maintains 91.8% of the current population and takes 6.8% from the current District 5, 1.2% from the current District 4, and 0.1% from the current District 1.

2.4. DISTRICT 4



District 4 is in Alameda County and includes the City of Alameda and the Oakland neighborhoods of Elmhurst, Eastmont, and Melrose. Other points of interest in District 4 include Mills College, Diamond Park, Oakland Medical Center, Eastmont Town Center, Oakland Coliseum, and Durant Square Mall.

BART Stations included in District 4:

- MacArthur (shared with District 3 and 7)
- 19th St/Oakland (shared with District 7)
- 12th St/Oakland City Center (shared with District 7)
- Lake Merritt (shared with District 7)
- Fruitvale
- Coliseum
- Coliseum/Airport Connector
- Oakland International Airport

2.4.1. CVAP Population Changes to District 4

The following table was taken from file “BART_CVAP_PLANABC_20220120”.

Plan B, District 4: CVAP From Current Districts	Total CVAP	Percent CVAP
Total	261,942	100.0%
District 3	891	0.3%
District 4	261,051	99.7%
District 7	0	0.0%

Figure 7 District 4 maintains 99.7% of the current CVAP population and takes 0.3% from the current District 3.

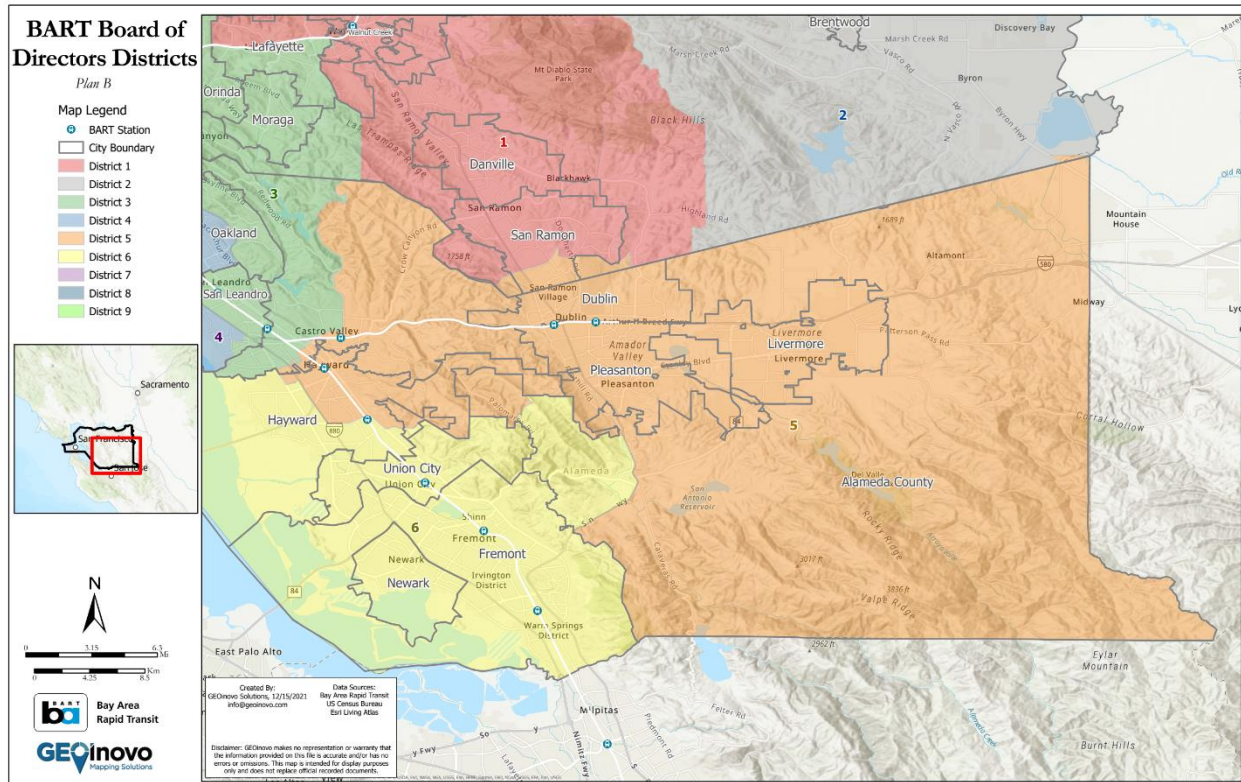
2.4.2. Population Changes to District 4

The following table was taken from file “BART_Population_PLANABC_20220120”.

Plan B, District 4: Population From Current Districts	Total Population	Percent Population
Total	414,113	100.0%
District 3	1,170	0.3%
District 4	412,943	99.7%

Figure 8 District 4 maintains 99.7% of the current population and takes 0.3% from the current District 3.

2.5. DISTRICT 5



District 5 is in Alameda and Contra Costa Counties and includes the West of the City of Hayward including the populated areas bounded by Highway 880 to the west, Highway 238 to the east, and W Tennyson Rd to the south. Major places and landmarks in this area include Fairview, Sorensen, Don Castro Regional Recreation Area, and a residential development to the northwest of TPC Stonebrae Country Club. District 5 also includes the City of Pleasanton, the City of Livermore, the City of Dublin, a Southern piece of the City of San Ramon, and rural areas of east Alameda County.

BART Stations included in District 5:

- Castro Valley (shared with District 3)
- Hayward
- Castro Valley
- West Dublin/Pleasanton
- Dublin/Pleasanton
- South Hayward (shared with District 6)

2.5.1. CVAP Population Changes to District 5

The following table was taken from file “BART_CVAP_PLANABC_20220120”.

Plan B, District 5: CVAP From Current Districts	Total CVAP	Percent CVAP
Total	253,007	100.0%
District 1	6,924	2.7%
District 2	0	0.0%
District 3	5,341	2.1%
District 4	0	0.0%
District 5	240,742	95.2%
District 6	0	0.0%

Figure 9 District 5 maintains 95.2% of the current CVAP population and takes 2.7% from the current District 1 and 2.1% from the current District 3.

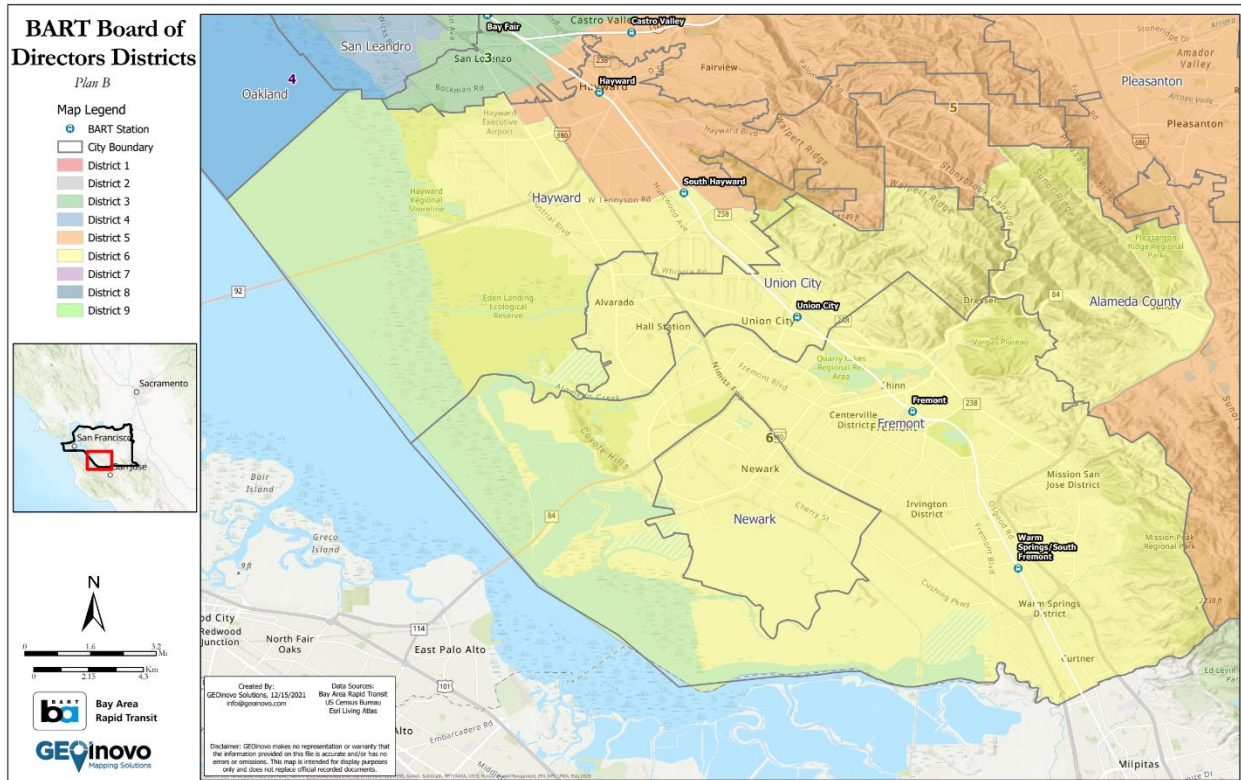
2.5.2. Population Changes to District 5

The following table was taken from file “BART_Population_PLANABC_20220120”.

Plan B, District 5: Population From Current Districts	Total Population	Percent Population
Total	414,236	100.0%
District 1	11,107	2.7%
District 3	9,735	2.4%
District 5	393,394	95.0%

Figure 10 District 5 maintains 95.0% of the current population and takes 2.7% from the current District 1 and 2.4% from the current District 3.

2.6. DISTRICT 6



District 6 is in Alameda County and includes the City of Fremont, Union City, the City of Newark, and the Southwestern part of the City of Hayward including the Hayward Regional Shoreline and Hayward Executive Airport. Major landmarks include Union Landing Shopping Center, Quarry Lakes Regional Recreation Area, and industrial/business facilities at the southern end of the district. Open space areas include Eden Landing Ecological Reserve, Vargas Plateau, Pleasanton Ridge Regional Park, and the Northwest area of Mission Peak Regional Park.

BART Stations included in District 6:

- South Hayward (shared with District 5)
- Union City
- Fremont
- Warm Springs/South Fremont

2.6.1. CVAP Population Changes to District 6

The following table was taken from file “BART_CVAP_PLANABC_20220120”.

Plan B, District 6: CVAP From Current Districts	Total CVAP	Percent CVAP
Total	256,973	100.0%
District 5	9,858	3.8%
District 6	247,115	96.2%

Figure 11 District 6 maintains 96.2% of the current CVAP population and takes 3.8% from the current District 5.

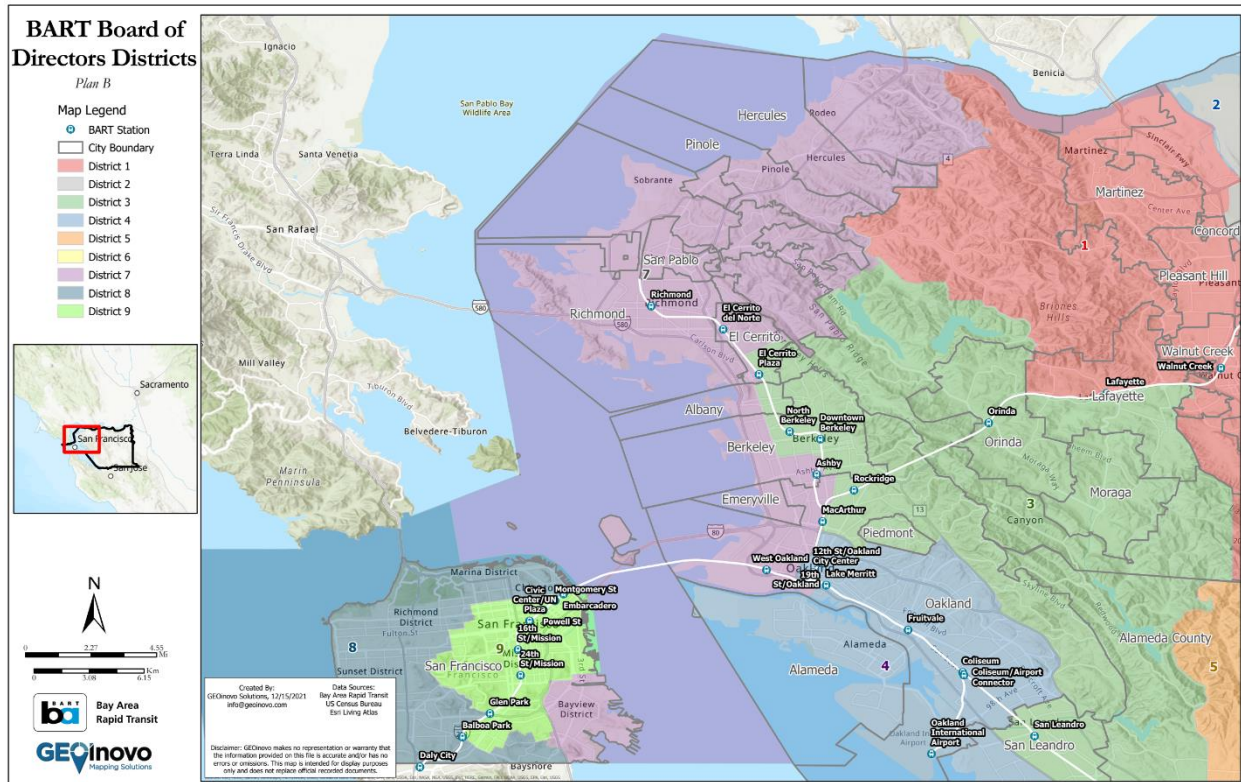
2.6.2. Population Changes to District 6

The following table was taken from file “BART_Population_PLANABC_20220120”.

Plan B, District 6: Population From Current Districts	Total Population	Percent Population
Total	414,170	100.0%
District 5	15,122	3.7%
District 6	399,048	96.3%

Figure 12 District 6 maintains 96.3% of the current population and takes 3.7% from the current District 5.

2.7. DISTRICT 7



District 7 is in Contra Costa, Alameda, and San Francisco Counties and includes the City of Richmond, the City of San Pablo, the City of Pinole, the City of Hercules, the Western part of the City of Albany, the Western part of Berkeley along the waterfront, the City of Emeryville, West Oakland, the Bayview District of San Francisco.

BART Stations included in District 7:

- Richmond
- El Cerrito del Norte
- El Cerrito Plaza (shared with District 3)
- Ashby (shared with District 3)
- MacArthur (shared with District 3 and 4)
- 19th St/Oakland (shared with District 4)
- 12th St/Oakland City Center (shared with District 4)
- West Oakland

2.7.1. CVAP Population Changes to District 7

The following table was taken from file “BART_CVAP_PLANABC_20220120”.

Plan B, District 7: CVAP From Current Districts	Total CVAP	Percent CVAP
Total	256,832	100.0%
District 1	5	0.0%
District 3	8,382	3.3%
District 4	0	0.0%
District 7	248,445	96.7%

Figure 13 District 7 maintains 96.7% of the current CVAP population and takes 3.3% from the current District 3.

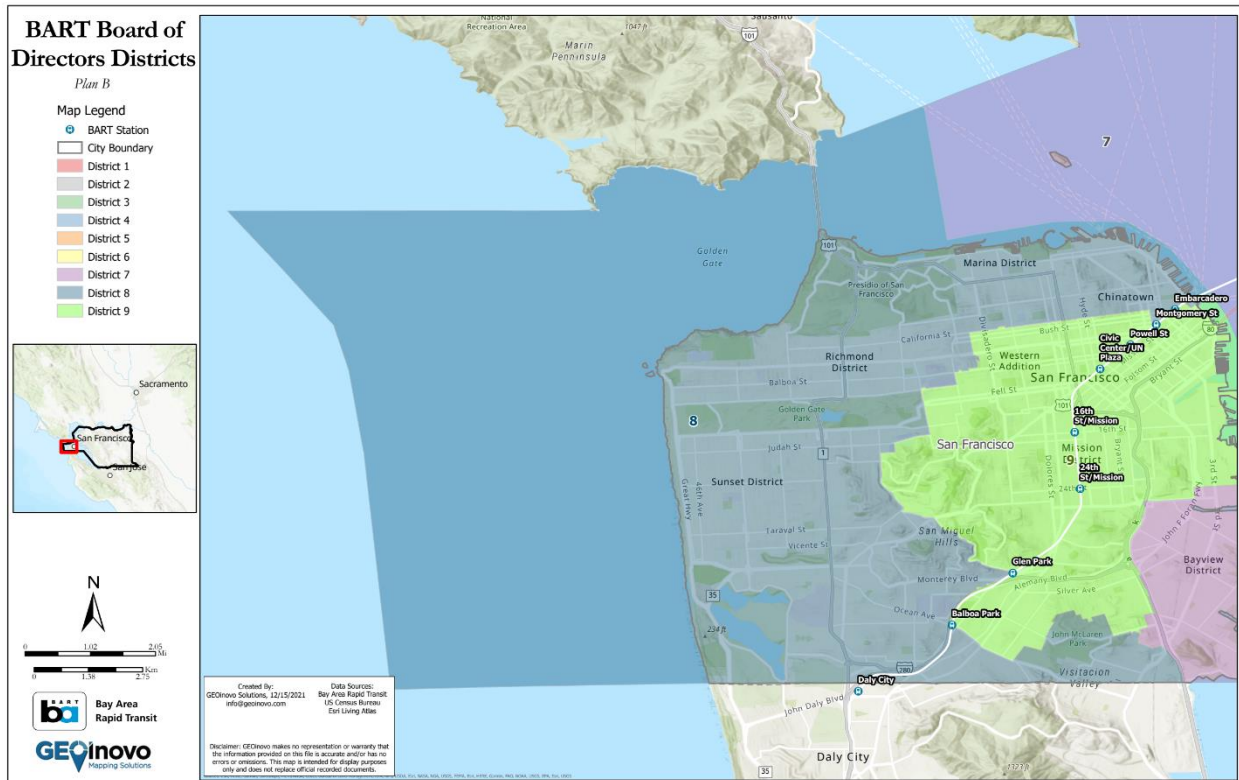
2.7.2. Population Changes to District 7

The following table was taken from file “BART_Population_PLANABC_20220120”.

Plan B, District 7: Population From Current Districts	Total Population	Percent Population
Total	414,119	100.0%
District 1	10	0.0%
District 3	11,908	2.9%
District 7	402,201	97.1%

Figure 14 District 7 maintains 97.1% of the current population and takes 2.9% from the current District 3.

2.8. DISTRICT 8



District 8 is in San Francisco County and includes the following neighborhoods and points of interest: North Beach, Chinatown, Marina District, Fort Winfield Scott, Richmond District, Sunset District, and Ingleside. Landmarks include John McLaren Park, the Golden Gate Bridge, San Francisco State University, and the world-famous Lombard St.

BART Stations included in District 8:

- Balboa Park (shared with District 9)
- Glen Park (shared with District 9)
- Powell St (shared with District 9)
- Embarcadero (shared with District 7 and 9)
- Montgomery St (shared with District 7 and 9)

2.8.1. CVAP Population Changes to District 8

The following table was taken from file “BART_CVAP_PLANABC_20220120”.

Plan B, District 8: CVAP From Current Districts	Total CVAP	Percent CVAP
Total	327,773	100.0%
District 7	0	0.0%
District 8	303,578	92.6%
District 9	24,195	7.4%

Figure 15 District 8 maintains 92.6% of the current CVAP population and takes 7.4% from the current District 9.

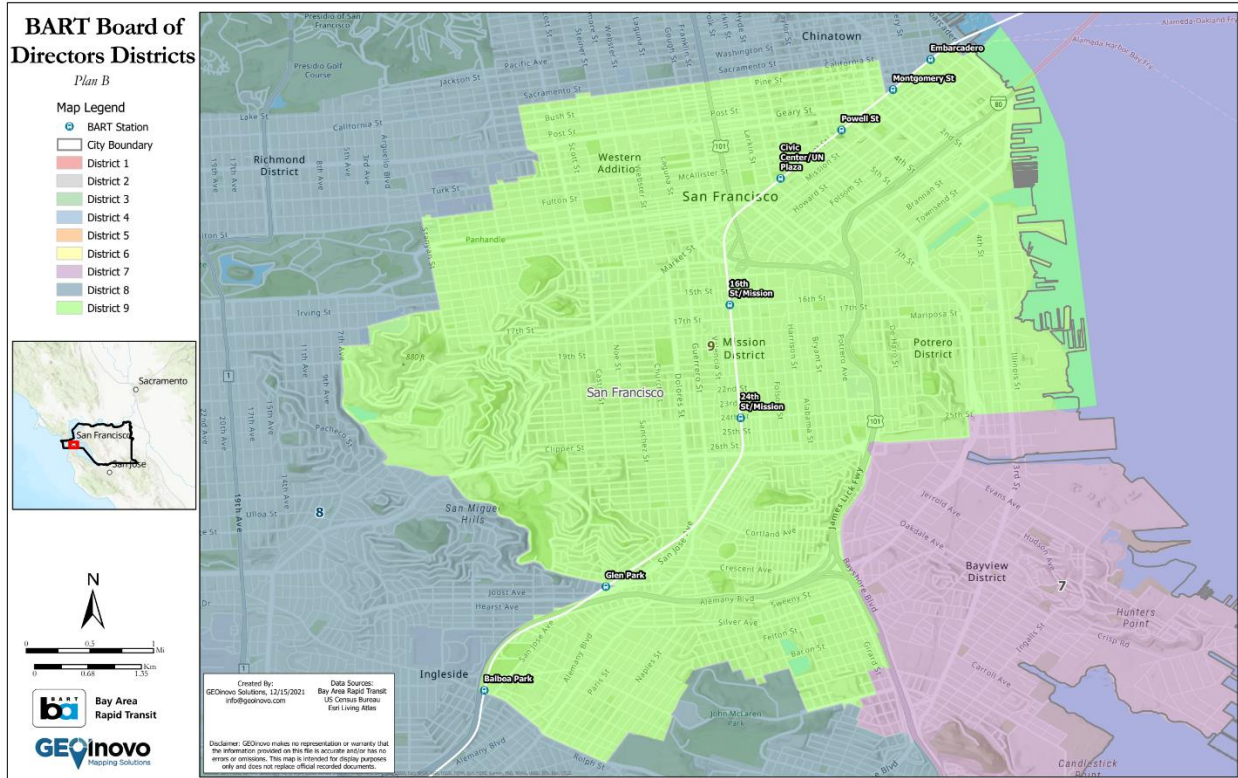
2.8.2. Population Changes to District 8

The following table was taken from file “BART_Population_PLANABC_20220120”.

Plan B, District 8: Population From Current Districts	Total Population	Percent Population
Total	413,980	100.0%
District 8	383,690	92.7%
District 9	30,290	7.3%

Figure 16 District 8 maintains 92.7% of the current population and takes 7.3% from the current District 9.

2.9. DISTRICT 9



District 9 is in San Francisco County and includes the following neighborhoods and points of interest: Western Addition, Twin Peaks, Diamond Heights, Glen Canyon Park, St Mary’s Recreation Center, Bernal Heights Park, Union Square, Mission District, Potrero District, Pier 50, and the Salesforce Transit Center.

BART Stations included in District 9:

- Embarcadero (shared with District 8)
- Montgomery St (shared with District 8)
- Powell St (shared with District 8)
- Civic Center/UN Plaza
- 16th St/Mission
- 24th St/Mission
- Glen Park (shared with District 8)
- Balboa Park (shared with District 8)

2.9.1. CVAP Population Changes to District 9

The following table was taken from file “BART_CVAP_PLANABC_20220120”.

Plan B, District 9: CVAP From Current Districts	Total CVAP	Percent CVAP
Total	296,506	100.0%
District 7	22,407	7.6%
District 9	274,099	92.4%

Figure 17 District 9 maintains 92.4% of the current CVAP population and takes 7.6% from the current District 7.

2.9.2. Population Changes to District 9

The following table was taken from file “BART_Population_PLANABC_20220120”.

Plan B, District 9: Population From Current Districts	Total Population	Percent Population
Total	414,306	100.0%
District 7	40,439	9.8%
District 9	373,867	90.2%

Figure 18 District 9 maintains 90.2% of the current population and takes 9.8% from the current District 7.