

2022

BART Redistricting: Plan E



GEOinovo Solutions Inc.

BART Redistricting

2/28/2022

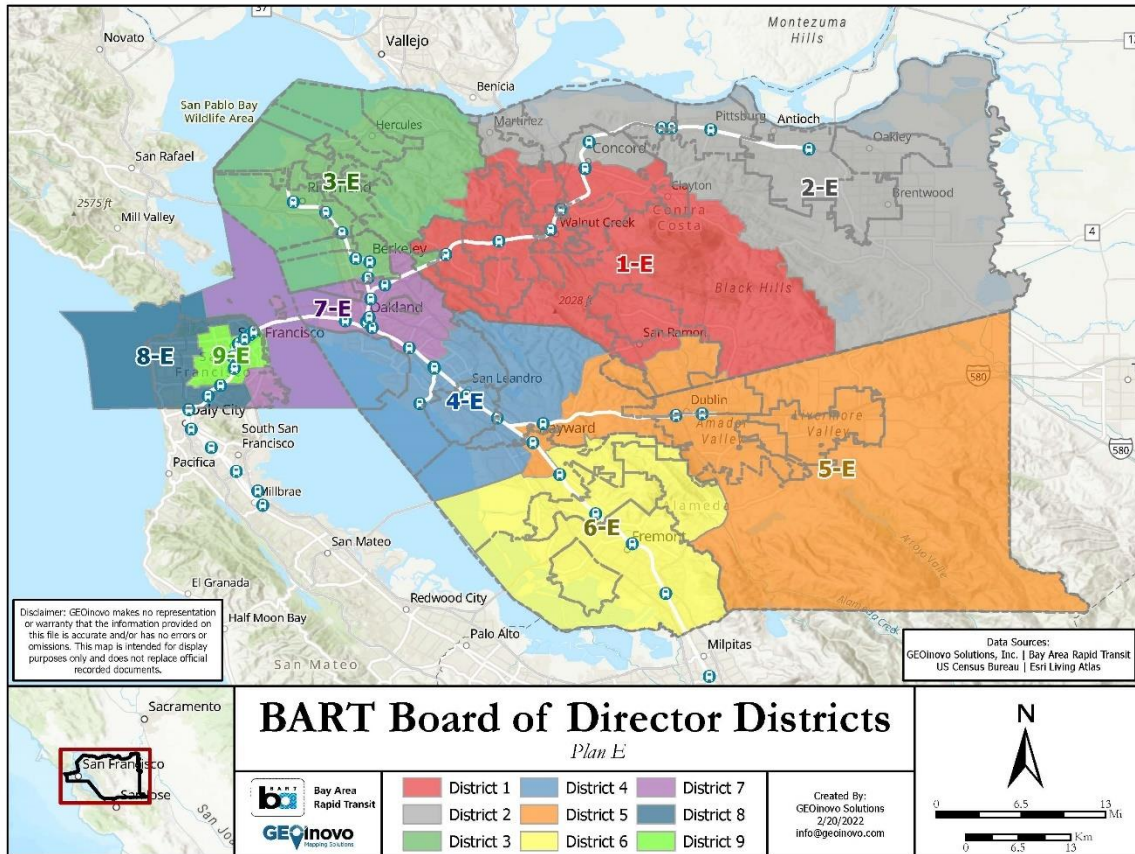
TABLE OF CONTENTS

1. Overview of Plan E.....	1
1.1. Overview Map of Plan E.....	1
2. Plan E by District.....	3
2.1. District 1.....	3
2.2. District 2.....	5
2.3. District 3.....	6
2.4. District 4.....	8
2.5. District 5.....	10
2.6. District 6.....	12
2.7. District 7.....	13
2.8. District 8.....	15
2.9. District 9.....	17

1. OVERVIEW OF PLAN E

1.1. OVERVIEW MAP OF PLAN E

Below shows the overview of Plan E. The individual districts are described further in Section 2. Plan E by District.



Plan D was developed to consider comments from the BART Board of Directors, the Mayor Cloven of Clayton, and members of the public. The following table details these comments.

Comment	Director/Public	Plan E
Chinatown	Director Li	✓
Bayview District	Director Li	✓
Marina District	Director Li	✓
City of Clayton	Director Allen, Mayor Cloven	✓
Morgan Territory Rd	Director Allen	✓
City of Orinda	Director Allen	✓
City of Lafayette	Director Allen	✓
Concord Station	Director Allen	✓

Martinez Station + population	Director Foley	✓
Sunol / Vargas Plateau / Niles Canyon	Director Ames	✓
Oakland, African American pop	Director Raburn, Public	✓
City of Oakland (2 districts)	Director Raburn, Public	✓
City of Oakland (3 districts) *	Director Raburn, Public	
El Cerrito Plaza	President Saltzman	✓
City of El Cerrito	President Saltzman	✓
City of Albany	President Saltzman	✓
Coliseum / OAK linked together	President Saltzman, Director Raburn	✓
UC Berkeley **	President Saltzman	
D3: Geographic compactness	Pres. Saltzman, Dir. McPartland, Allen	✓
El Cerrito Plaza Station	President Saltzman	✓

*Feedback for the City of Oakland (3 Districts) were incorporated into Plan D.

**Feedback for UC Berkeley was incorporated into Plan D.

Changes to the Citizen Voting Age Population (CVAP) per District

Plan E proposes substantial changes to some of the districts to maintain CVAP balanced districts and incorporate feedback from the meetings. For example, District 7 only maintains 28.1% of CVAP when compared to the current district population. By contrast, District 6 maintains 95.2% of CVAP when compared to the current district 6.

Detailed breakdowns for each District are provided in Section 2. Plan E by District.

Bay Area Rapid Transit (BART) Census Population Shifts for Proposed Board of Director Districts

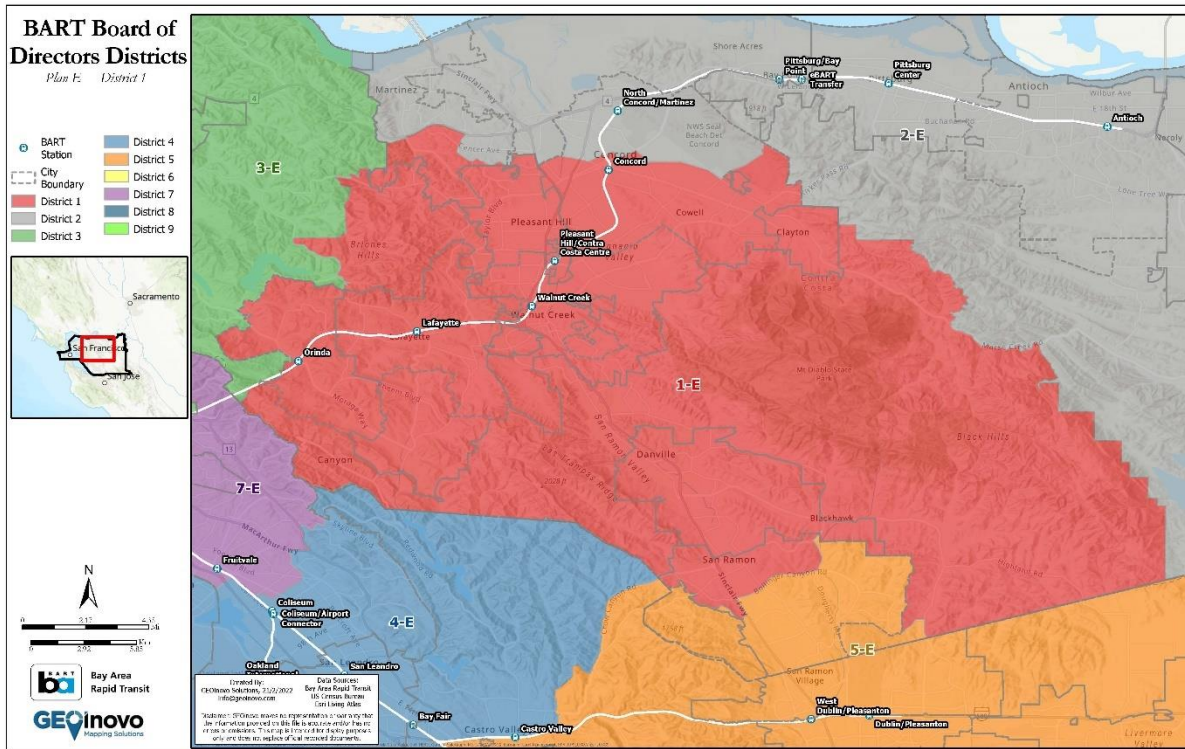
The population shifts for Plan E are similar to the CVAP population changes for each of the nine districts in Plan E. Population shifts for each district and each proposed plan vary depending on changes between 2010 and 2020 U.S. Census Block geography, different rates of population growth throughout the BART service area and responding to feedback from the public meetings.

This plan presents districts with varying levels of similarity to the current BART districts. The greatest change is in District 7 with only 28.6% of its current population remaining in District 7. The next district to show major changes is District 3 with 32.0% of its current population remaining in the proposed Plan E, District 3. District 4 maintains 47.2% of its current population. Districts 1, 8, and 9 maintain greater than 75% of their current populations and District 5 maintains 82.4% of its current population. The district most similar to the current boundaries is District 6 with 95.6% of its current population.

Detailed breakdowns for each District are provided in Section 2. Plan E by District.

2. PLAN E BY DISTRICT

2.1. DISTRICT 1



District 1 is in Contra Costa County and includes the Southern portion of the City of Martinez, Pleasant Hill, Walnut Creek, the City of Danville, the Northern part of the City of San Ramon, the City of Lafayette, the Southern part of the City of Concord, including Cowell, Four Corners, and Meinert, the City of Moraga, the City of Orinda, and the City of Clayton.

BART Stations included in District 1:

- Orinda (shared with District 3)
- Lafayette
- Walnut Creek
- Pleasant Hill/Contra Costa Centre
- Concord (shared with District 2)

2.1.1. CVAP Population Changes to District 1

The following table was taken from file “BART_CVAPShift_PlanD-E_20220219”.

Plan E, District 1: Pop. from Current Districts	Total Population	Percent Population
Total	294,118	100.0%
District 1	226,505	77.0%
District 2	28,112	9.6%
District 3	39,501	13.4%

Figure 1 District 1 maintains 77.0% of the current CVAP population, takes 9.6% from the current District 2, and 13.4% from District 3.

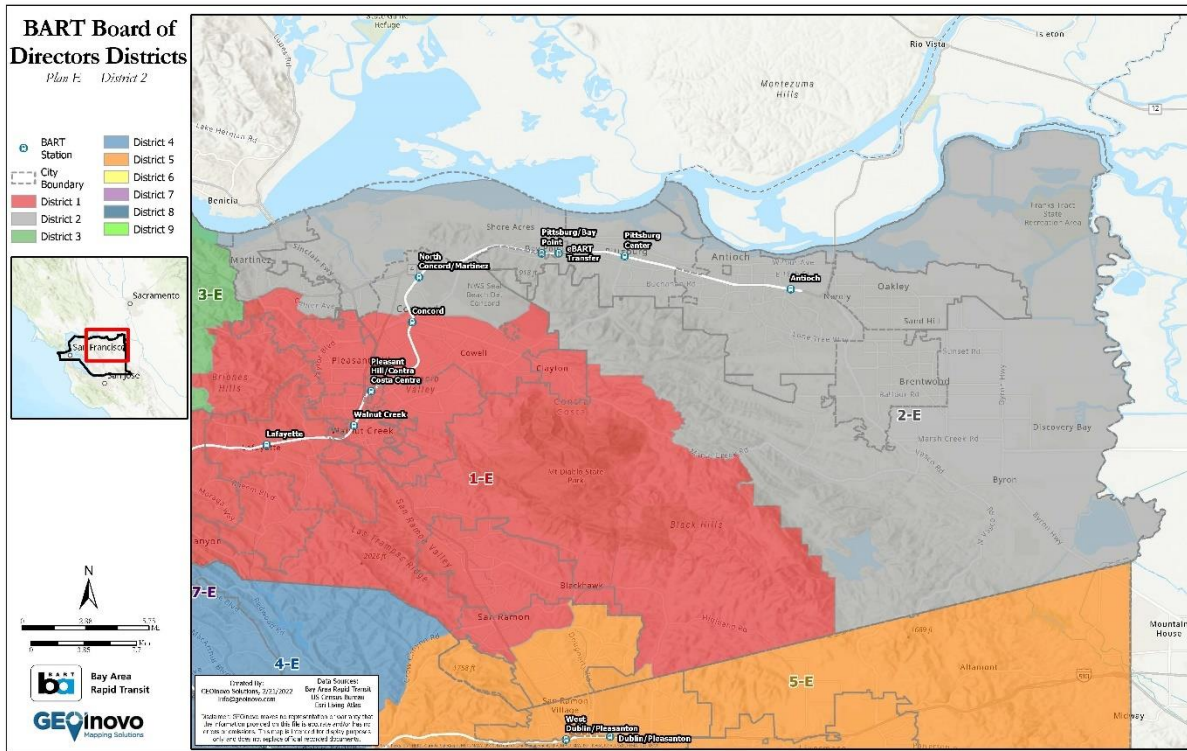
2.1.2. Population Changes to District 1

The following table was taken from file “BART_PopulationShift_PlanD-E_20220219”.

Plan E, District 1: Pop. from Current Districts	Total Population	Percent Population
Total	414,240	100.0%
District 1	311,204	75.1%
District 2	49,473	11.9%
District 3	53,563	12.9%

Figure 2 District 1 maintains 75.1% of the current population, takes 11.9% from the current District 2, and 12.9% from District 3.

2.2. DISTRICT 2



District 2 is in Contra Costa County and includes the City of Pittsburg, the City of Antioch, the City of Brentwood, the City of Oakley, the Northeastern part of the City of Concord including NWS Seal Beach Det Concord, and the Northern part of the City of Martinez including the unincorporated neighborhoods of Mountain View and Vine Hill.

BART Stations included in District 2:

- Concord (shared with District 1)
- North Concord/Martinez
- Pittsburg/Bay Point
- Antioch
- Pittsburg Center
- eBART Transfer

2.2.1. CVAP Population Changes to District 2

The following table was taken from file “BART_CVAPShift_PlanD-E_20220219”.

Plan E, District 2: Pop. from Current Districts	Total Population	Percent Population
Total	264,301	100.0%
District 1	25,888	9.8%

District 2	238,413	90.2%
-------------------	----------------	--------------

Figure 3 District 2 maintains 90.2% of the current CVAP population and takes 9.8% from the current District 1.

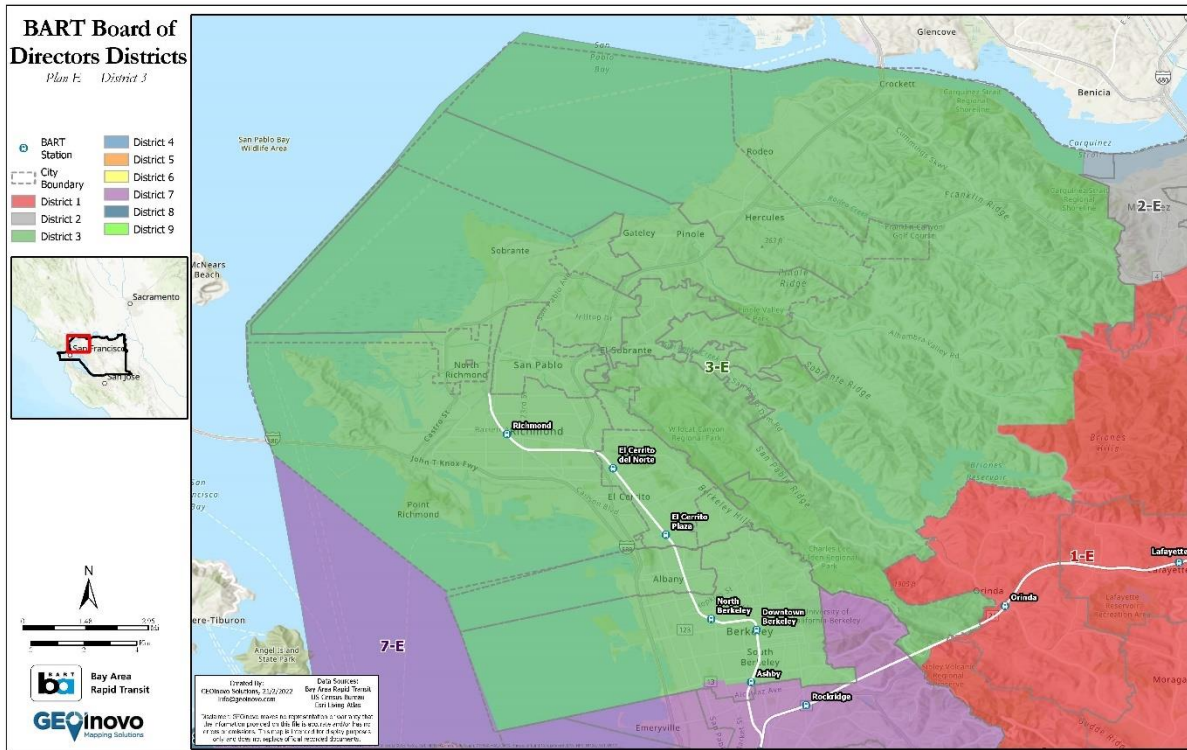
2.2.2. Population Changes to District 2

The following table was taken from file “BART_PopulationShift_PlanD-E_20220219”.

Plan E, District 2: Pop. from Current Districts	Total Population	Percent Population
Total	414,013	100.0%
District 1	35,491	8.6%
District 2	378,522	91.4%

Figure 4 District 2 maintains 91.4% of the current population and takes 8.6% from the current District 1.

2.3. DISTRICT 3



District 3 is in both Contra Costa and Alameda Counties and includes the City of Hercules, the City of Pinole, the City of San Pablo, the City of Richmond, the City of El Cerrito, the City of Albany, the majority of the City of Berkeley except a few neighborhoods to the South of Ashby Ave and the University of Berkeley, and unincorporated parts of Contra Costa County including North Richmond and El Sobrante.

BART Stations included in District 3:

- Richmond
- Rockridge (shared with District 7)
- 19th St/Oakland
- El Cerrito del Norte
- El Cerrito Plaza
- North Berkeley
- Downtown Berkeley
- Ashby (shared with District 7)
- Orinda (shared with District 1)

2.3.1. CVAP Population Changes to District 3

The following table was taken from file “BART_CVAPShift_PlanD-E_20220219”.

Plan E, District 3: Pop. from Current Districts	Total Population	Percent Population
Total	267,433	100.0%
District 1	622	0.2%
District 3	97,833	36.6%
District 7	168,978	63.2%

Figure 5 District 3 maintains 36.6% of the current CVAP population and takes 63.2% from the current District 7, and 0.2% from the current District 1.

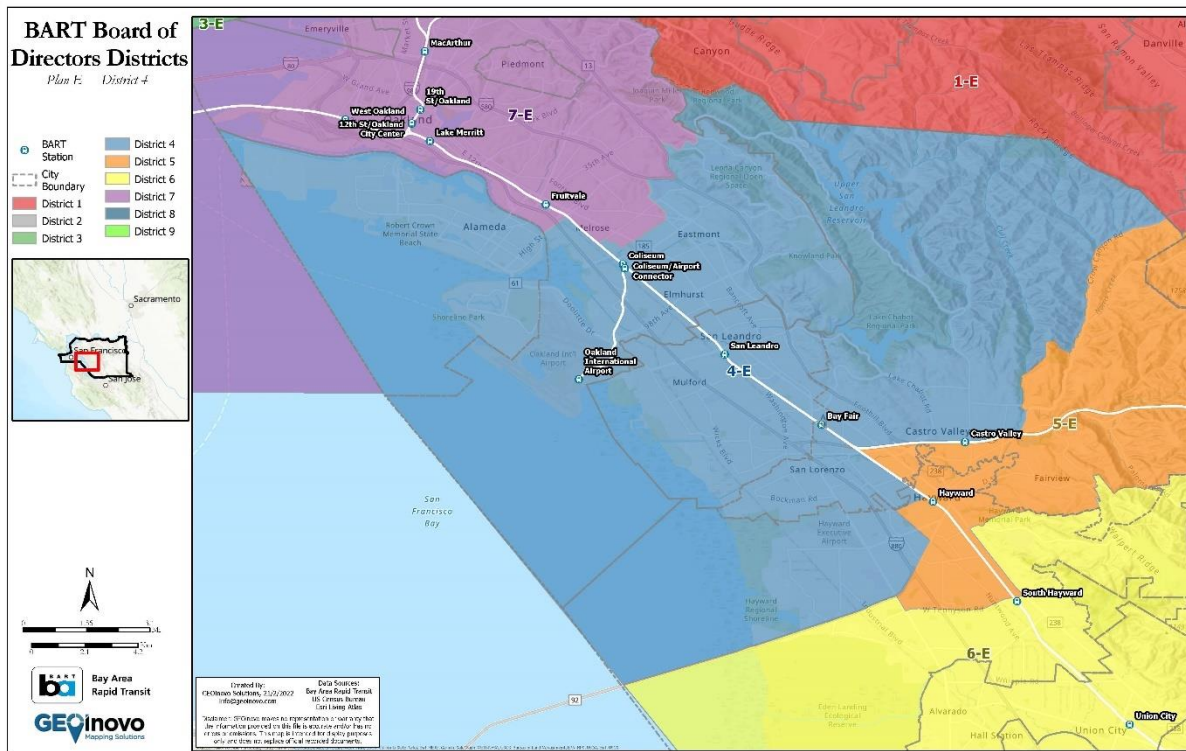
2.3.2. Population Changes to District 3

The following table was taken from file “BART_PopulationShift_PlanD-E_20220219”.

Plan E, District 3: Pop. from Current Districts	Total Population	Percent Population
Total	413,989	100.0%
District 1	718	0.2%
District 3	132,627	32.0%
District 7	280,644	67.8%

Figure 6 District 3 maintains 32.0% of the current population and takes 67.8% from the current District 7, and 0.2% from the current District 1.

2.4. DISTRICT 4



District 4 is in Alameda County and includes the City of Alameda, the City of San Leandro, and the Oakland neighborhoods of Elmhurst and Eastmont. Other points of interest in District 4 include Oakland International Airport, Hayward Regional Shoreline, Lake Chabot, San Leandro Hills, Upper San Leandro Reservoir, Castro Valley, Russell City, and Monarch Bay Gold Club.

BART Stations included in District 4:

- Coliseum (shared with District 7)
- Coliseum/Airport Connector
- Oakland International Airport
- Fruitvale (shared with District 7)
- San Leandro
- Bay Fair
- Castro Valley (shared with District 5)
- Hayward (shared with District 5)

2.4.1. CVAP Population Changes to District 4

The following table was taken from file “BART_CVAPShift_PlanD-E_20220219”.

Plan E, District 4: Pop. from Current Districts	Total Population	Percent Population
Total	262,927	100.0%
District 3	91,516	34.8%
District 4	122,742	46.7%
District 5	48,669	18.5%

Figure 7 District 4 maintains 46.7% of the current CVAP population, takes 34.8% from the current District 3, and 18.5% from the current District 5.

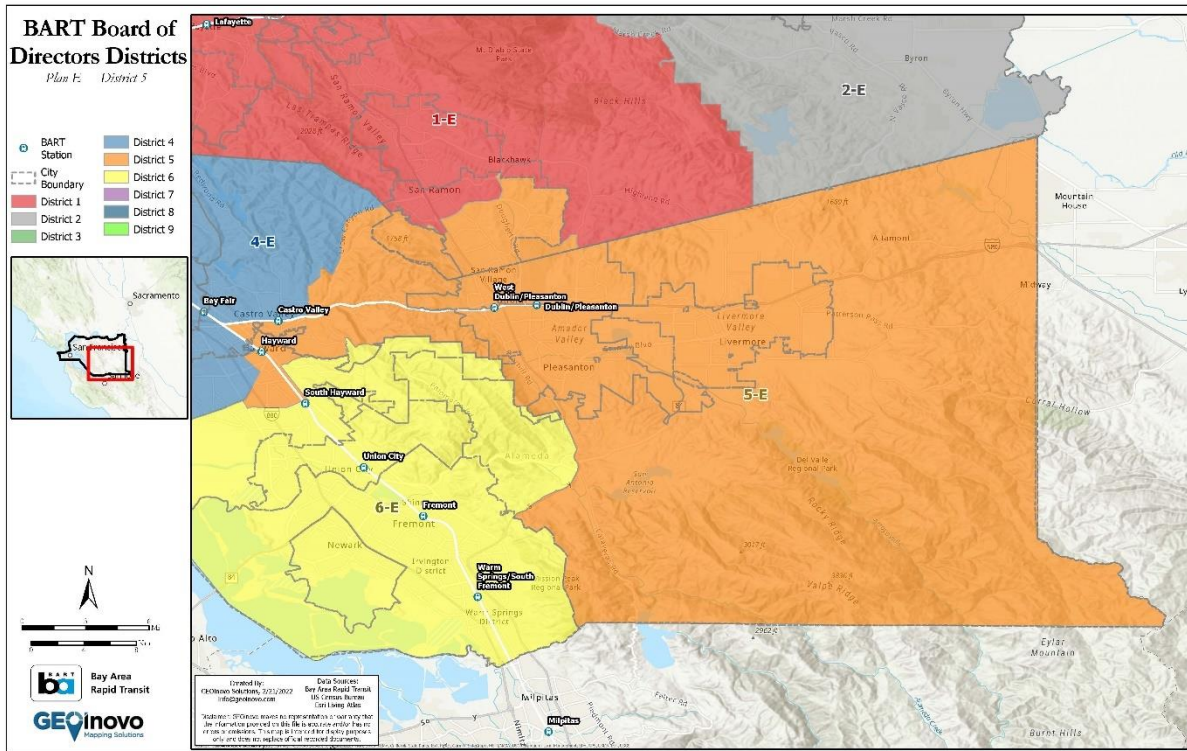
2.4.2. Population Changes to District 4

The following table was taken from file “BART_PopulationShift_PlanD-E_20220219”.

Plan E, District 4: Pop. from Current Districts	Total Population	Percent Population
Total	414,064	100.0%
District 3	141,404	34.2%
District 4	195,378	47.2%
District 5	77,282	18.7%

Figure 8 District 4 maintains 47.2% of the current population, takes 34.2% from the current District 3, and 18.7% from District 5.

2.5. DISTRICT 5



District 5 is in Alameda and Contra Costa Counties and includes a portion of the City of Hayward ranging from the Castro Valley BART station in the North to the South Hayward station in the South. Major places and landmarks in this area include the Fairview, the Western part of Sorensen, Don Castro Regional Recreation Area, Castlewood Country Club and Altamont. District 5 also includes the City of Pleasanton, the City of Livermore, the City of Dublin, the Southeastern part of San Ramon, and rural areas of east Alameda County.

BART Stations included in District 5:

- Hayward (shared with District 4)
- South Hayward (shared with District 6)
- Castro Valley (shared with District 4)
- West Dublin/Pleasanton
- Dublin/Pleasanton

2.5.1. CVAP Population Changes to District 5

The following table was taken from file “BART_CVAPShift_PlanD-E_20220219”.

Plan E, District 5: Pop. from Current Districts	Total Population	Percent Population
Total	246,787	100.0%
District 1	32,334	13.1%
District 3	3,185	1.3%
District 5	209,108	84.7%
District 6	2,160	0.9%

Figure 9 District 5 maintains 84.7% of the current CVAP population, takes 13.1% from the current District 1, 1.3% from District 3, and 0.9% from the current District 6.

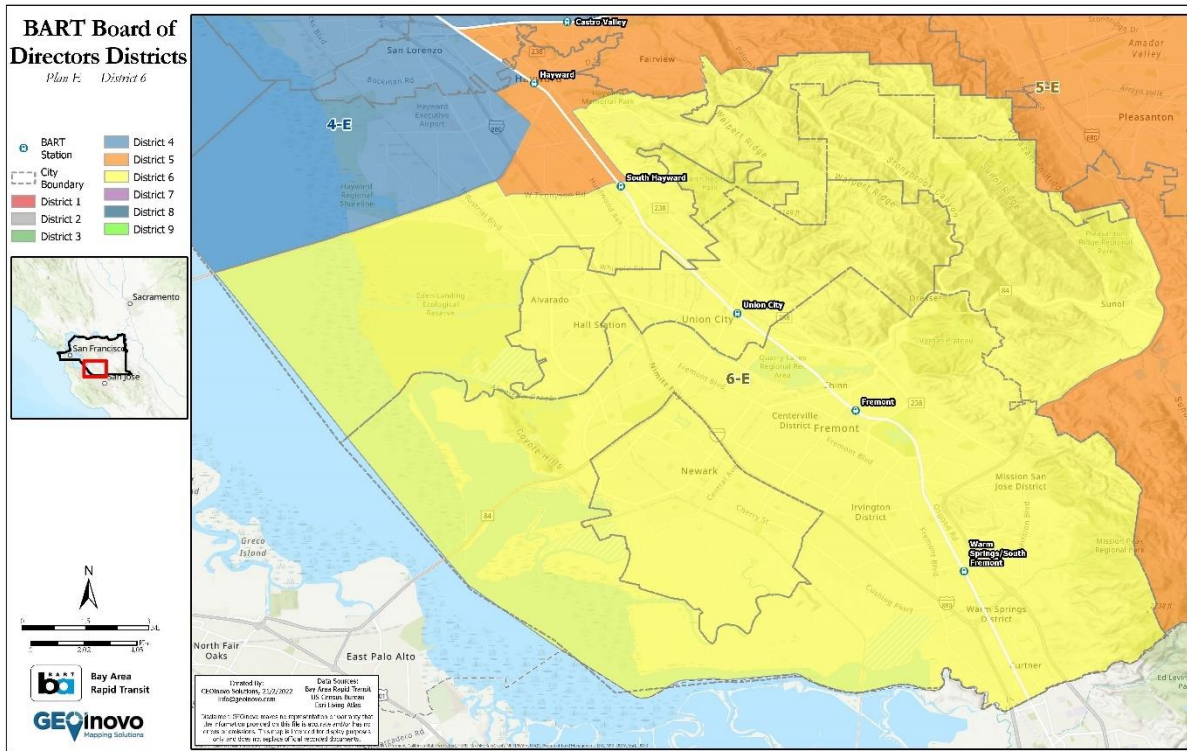
2.5.2. Population Changes to District 5

The following table was taken from file “BART_PopulationShift_PlanD-E_20220219”.

Plan E, District 5: Pop. from Current Districts	Total Population	Percent Population
Total	414,045	100.0%
District 1	64,071	15.5%
District 3	5,499	1.3%
District 5	341,099	82.4%
District 6	3,376	0.8%

Figure 10 District 5 maintains 82.4% of the current population, takes 15.5% from the current District 1, 1.3% from District 5, and 0.8% from the current District 6.

2.6. DISTRICT 6



District 6 is in Alameda County and includes the City of Fremont, Union City, the City of Newark, and the Southern part of the City of Hayward. Major landmarks include Ohlone Collect, Mission San Jose District, the Vargas Plateau, Pleasanton Ridge Regional Park, Walpert Ridge, and Eden Landing Ecological Reserve.

BART Stations included in District 6:

- Fremont
- South Hayward (shared with District 5)
- Union City
- Warm Springs/South Fremont

2.6.1. CVAP Population Changes to District 6

The following table was taken from file “BART_CVAPShift_PlanD-E_20220219”.

Plan E, District 6: Pop. from Current Districts	Total Population	Percent Population
Total	257,291	100.0%
District 5	12,336	4.8%
District 6	244,955	95.2%

Figure 11 District 6 maintains 95.2% of the current CVAP population and takes 4.8% from the current District 5.

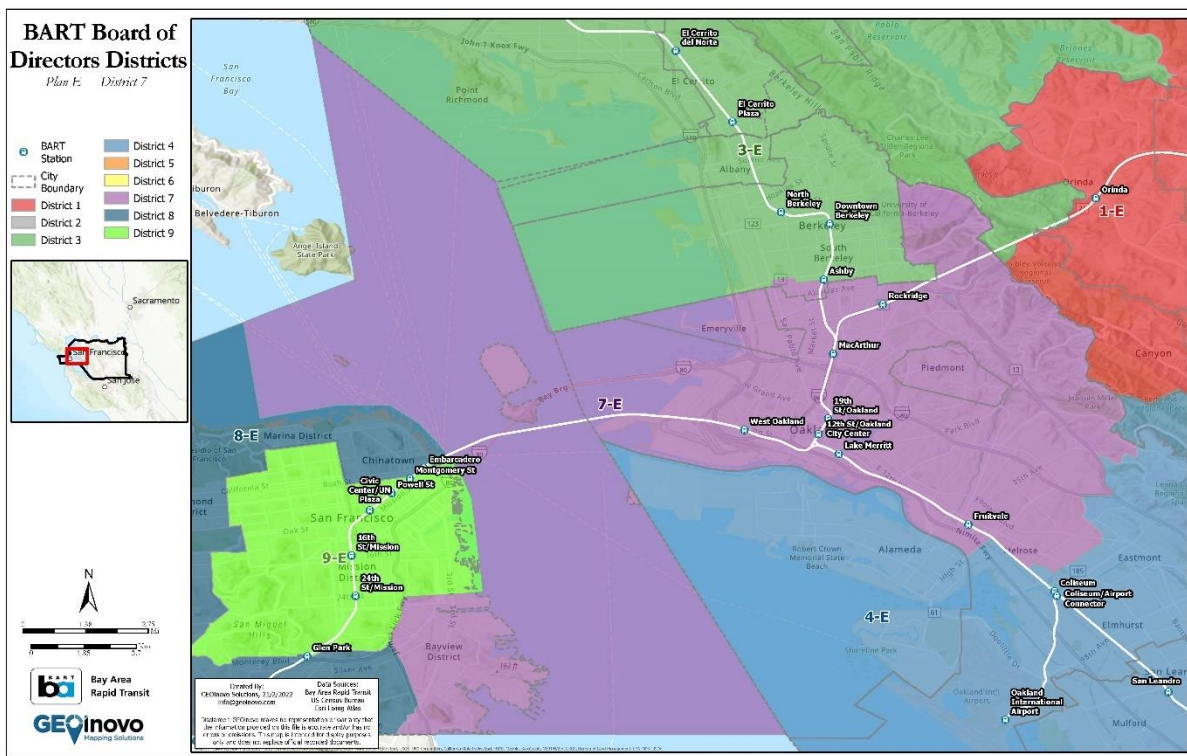
2.6.2. Population Changes to District 6

The following table was taken from file “BART_PopulationShift_PlanD-E_20220219”.

Plan E, District 6: Pop. from Current Districts	Total Population	Percent Population
Total	414,035	100.0%
District 5	18,363	4.4%
District 6	395,672	95.6%

Figure 12 District 6 maintains 95.6% of the current population and takes 4.4% from the current District 5.

2.7. DISTRICT 7



District 7 is in Alameda and San Francisco Counties and includes the Northern portion of Oakland including neighborhoods Melrose and West Oakland, The City of Emeryville, and the City of Piedmont. This District includes Treasure Island and the Bayview District of San Francisco. Places of interest in District 7 include Joaquin Miller Park, Lakeside Park, and Claremont Canyon Regional Preserve.

BART Stations included in District 7:

- Coliseum (shared with District 4)
- West Oakland
- 12th St/Oakland City Center

- Lake Merritt
- MacArthur
- Rockridge
- 19th St/Oakland
- Ashby (shared with District 3)
- Fruitvale (shared with District 4)

2.7.1. CVAP Population Changes to District 7

The following table was taken from file “BART_CVAPShift_PlanD-E_20220219”.

Plan E, District 7: Pop. from Current Districts	Total Population	Percent Population
Total	274,509	100.0%
District 3	52,984	19.3%
District 4	142,144	51.8%
District 7	77,207	28.1%
District 8	1,651	0.6%
District 9	523	0.2%

Figure 13 District 7 maintains 28.1% of the current CVAP population, takes 51.8% from the current District 4, 19.3% from District 3, 0.6% from District 8, and 0.2%% from the current District 9.

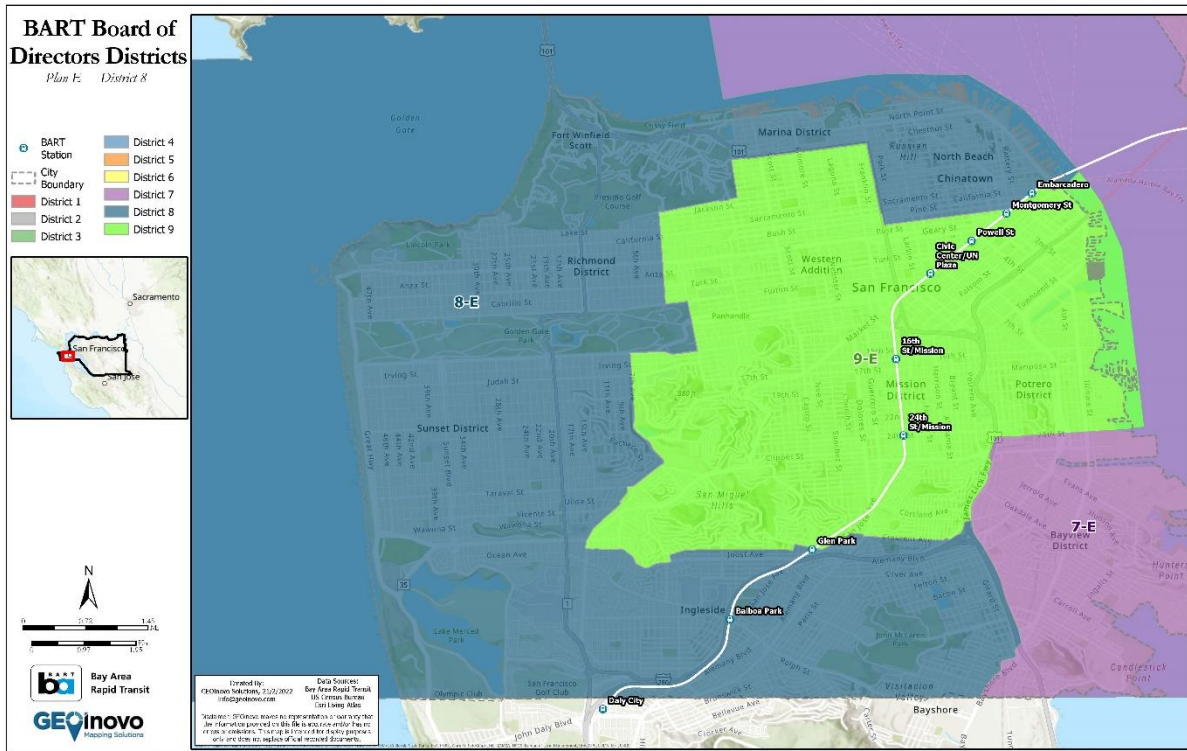
2.7.2. Population Changes to District 7

The following table was taken from file “BART_PopulationShift_PlanD-E_20220219”.

Plan E, District 7: Pop. from Current Districts	Total Population	Percent Population
Total	414,154	100.0%
District 3	69,574	16.8%
District 4	222,727	53.8%
District 7	118,559	28.6%
District 8	2,349	0.6%
District 9	945	0.2%

Figure 14 District 7 maintains 28.6% of the current population, takes 53.8% from the current District 4, 16.8% from the current District 3, 0.6% from District 8, and 0.2% from the current District 9.

2.8. DISTRICT 8



District 8 is in San Francisco County and includes the following neighborhoods and points of interest in San Francisco: North Beach, Chinatown, Marina District, Fort Winfield Scott, Richmond District, Sunset District, Ingleside, and John McLaren Park, the Golden Gate Bridge, the Western part of the Bayview District, and the world-famous Lombard St.

BART Stations included in District 8:

- Glen Park (shared with District 9)
- Balboa Park
- Powell (shared with District 9)
- Montgomery St (shared with District 9)
- Embarcadero (shared with District 9)

2.8.1. CVAP Population Changes to District 8

The following table was taken from file “BART_CVAPShift_PlanD-E_20220219”.

Plan E, District 8: Pop. from Current Districts	Total Population	Percent Population
Total	324,725	100.0%
District 7	2,260	0.7%
District 8	252,948	77.9%
District 9	69,517	21.4%

Figure 15 District 8 maintains 77.9% of the current CVAP population, takes 31.4% from the current District 9, and 0.7% from District 7.

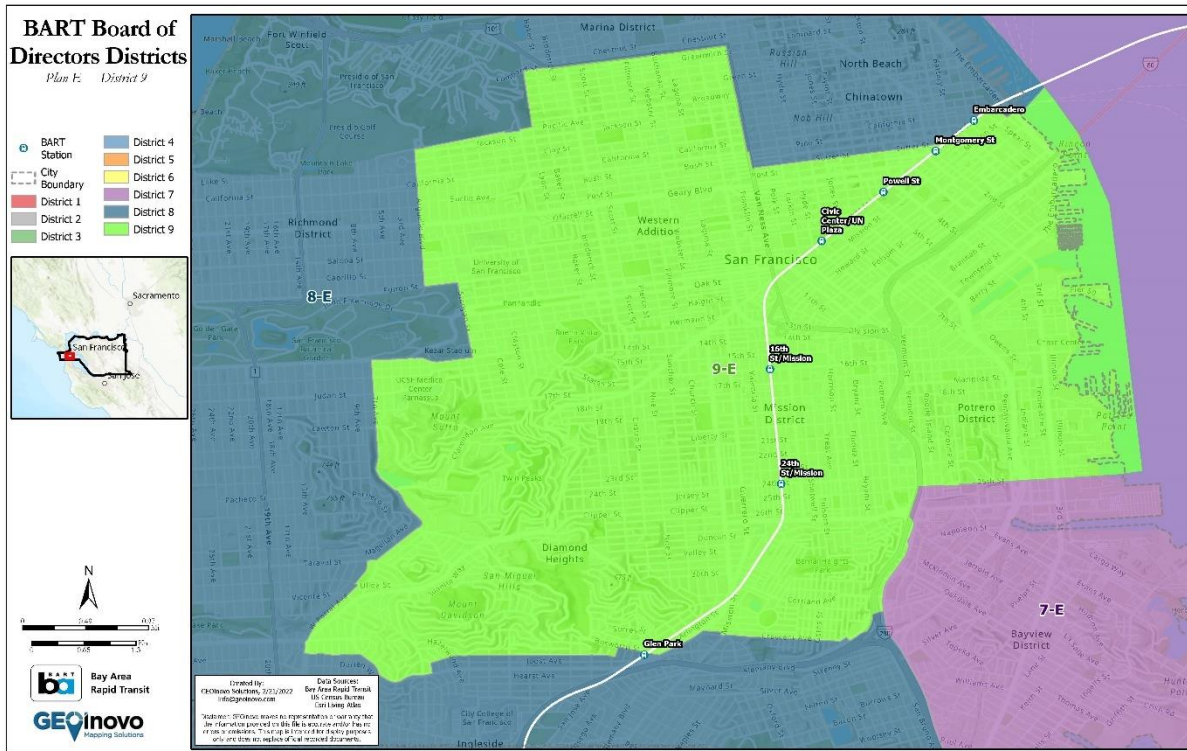
2.8.2. Population Changes to District 8

The following table was taken from file “BART_PopulationShift_PlanD-E_20220219”.

Plan E, District 8: Pop. from Current Districts	Total Population	Percent Population
Total	413,943	100.0%
District 7	2,998	0.7%
District 8	319,565	77.2%
District 9	91,380	22.1%

Figure 16 District 8 maintains 77.2% of the current population, takes 22.1% from the current District 9, and 0.7% from District 7.

2.9. DISTRICT 9



District 9 is in San Francisco County and includes the following neighborhoods and points of interest in San Francisco: Western Addition, Twin Peaks, Diamond Heights, Glen Canyon Park, St Mary’s Recreation Center, Bernal Heights Park, Mount Davidson, Union Square, Mission District, Potrero Center, Pier 50, and the Salesforce Transit Center.

BART Stations included in District 9:

- Montgomery St (shared with District 8)
- Embarcadero (shared with District 8)
- Powell St (shared with District 8)
- Civic Center/UN Plaza
- 16th St/Mission
- 24th St/Mission
- Glen Park (shared with District 8)

2.9.1. CVAP Population Changes to District 9

The following table was taken from file “BART_CVAPShift_PlanD-E_20220219”.

Plan E, District 9: Pop. from Current Districts	Total Population	Percent Population
Total	299,640	100.0%
District 7	22,407	7.5%
District 8	48,979	16.3%
District 9	228,254	76.2%

Figure 17 District 9 maintains 76.2% of the current CVAP population, takes 16.3% from the current District 8, and 7.5% from the current District 7.

2.9.2. Population Changes to District 9

The following table was taken from file “BART_PopulationShift_PlanD-E_20220219”.

Plan E, District 9: Pop. from Current Districts	Total Population	Percent Population
Total	414,047	100.0%
District 7	40,439	9.8%
District 8	61,776	14.9%
District 9	311,832	75.3%

Figure 18 District 9 maintains 75.3% of the current population, takes 14.9% from the current District 8, and 9.8% from District 7.