

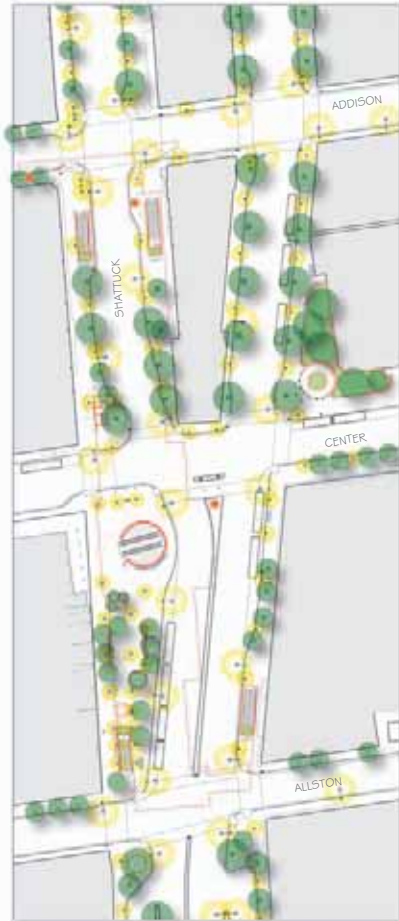


CITY OF BERKELEY

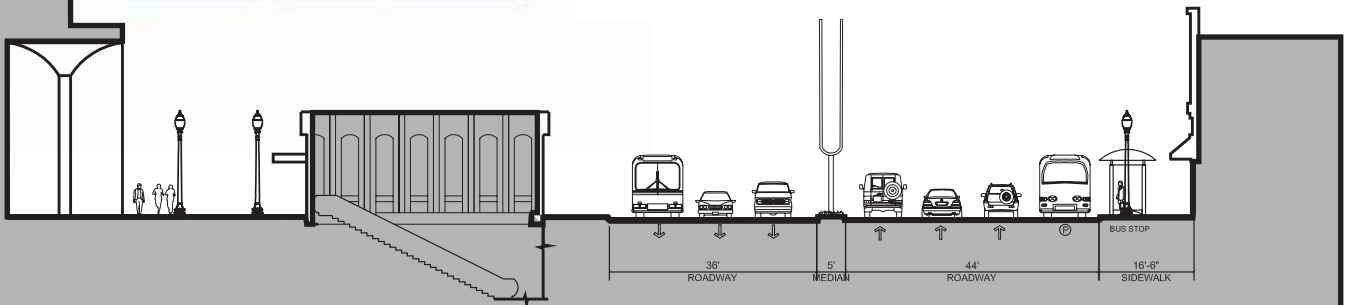
Department of Public Works
Transportation Division



Come Help Redesign The Downtown Berkeley BART Plaza & Transit Area



How can we improve the BART Plaza area?
What do you like?
What needs to change?
What would you like to see?



Community Workshop

JANUARY 23, 2006 * 7-9 PM

MultiPurpose Room, North Berkeley Senior Center @1901 Hearst Ave. at MLK

Downtown Berkeley BART Plaza and Transit Area Design Plan

In 2004, the City of Berkeley and its project partners, the Bay Area Rapid Transit District (BART) and the Alameda-Contra Costa Transit District (AC Transit), received a “Transportation for Livable Communities” (TLC) Planning and Community Design Grant from the Metropolitan Transportation Commission (MTC) to create a Design Plan for the Downtown Berkeley BART Plaza and Transit Area.

Study Goal

The primary goal of the BART Plaza and Transit Area Design Plan is to develop an urban design and access plan that will improve Downtown’s function as a transportation hub and support its continued commercial and cultural revitalization. Upcoming major transportation investments present the as well as the functional needs for access to BART, buses and shuttles, surrounding businesses, and other major destinations in the area.

Study Area

The primary study area for the BART Plaza and Transit Area Design Plan is along Shattuck Avenue between Addison Street and Allston Way.

Planning Process

The City, its project partners (BART and AC Transit), and the consultant team will develop the *Design Plan* through a community-based process. In addition to the Community Workshops which will occur over the course of the project, a Citizens Advisory Committee (CAC) is helping to guide community involvement and provide important feedback at key stages of the planning process. Each stage of the process will include a meeting with the Technical Working Group (TWG) to discuss technical issues affecting the designs and a meeting with the CAC, as well as a Community Workshop. The basic outline of the scope of work is as follows:

Study Existing Conditions	<i>January – early February 2006</i>
Community Workshop #1	<i>January 2006</i>
Develop Sketch Alternatives	<i>February – March 2006</i>
Community Workshop #2	<i>April 2006</i>
Develop Detailed Alternatives	<i>April – May 2006</i>
Develop BART Plaza and Transit Area Concept Plans	<i>June – September 2006</i>
Community Workshop #3	<i>June 2006</i>
Presentations to Planning and Transportation Commissions	<i>September 2006</i>
Presentation to City Council	<i>October 2006</i>

Additional Information

For more information about the project or to receive notification of future community workshops, please contact Kara Vuicich, Associate Planner, City of Berkeley Transportation Division at (510) 981-7065 or kvuicich@ci.berkeley.ca.us. You can also visit the Transportation Division website for additional information: www.ci.berkeley.ca.us/transportation/.

To request a sign language interpreter, assistive-listening device, real-time captioning or other accommodation for the community workshop, please call 981-7065 (voice) or 981-6903 (TDD). Please provide at least five working days' notice to ensure availability at the meeting.